



**FORENSIC
MENTAL HEALTH**

Association of California

*Moving Ahead:
Building a Better
Continuum of Care*

.....
2008 PROGRAM

ANNUAL FMHAC CONFERENCE

March 19-21, 2008

Embassy Suites, Seaside, CA

33rd Annual Conference Presented by...

The Forensic Mental Health Association of California

660 Fourth Street #295 · San Francisco, California 94107-1618

Phone: 415-407-1344 · Fax: 415-358-4757

www.fmhac.net · fmhac@fmhac.net

BOARD OF DIRECTORS

President

Kenneth A. Carabello, LCSW

Director of Conference

Munir Sewani, PhD

Vice President

Mark Grabau, PhD

Director of Education

David Polak, LCSW

Treasurer

Carrie Gustafson

Secretary

Jennifer Rossi, MA

CONFERENCE PLANNING COMMITTEE

Chair

Munir Sewani, PhD

Members

Denise Betting, LCSW

Malia Haas, LCSW

Jean Mariani

Alison Stanley, PhD

HEALTH COMMITTEE

Chair

Mitchell Marquez, LCSW

Members

Alisa Dunn, LCSW

Jim Garcia

Barclay Kenyon, MFTI

Cyndee Reston-Parham, PhD

Joyce Sutton, MD

PUBLIC POLICY COMMITTEE

Chair

Mark Grabau, PhD

Peter Kalmar, MFT

Ronald Kaufman, PsyD

Bryan Nelson, MFT

Jennifer Orthwein, PhD

Justine Schmollinger, PhD, JD

Renee Wilkinson, PhD

Martha Wilson, PhD

Executive Director

Molly Willenbring

Letter from the President

Welcome to the annual conference for the Forensic Mental Health Association of California (FMHAC)! As I'm sure you've noticed we have an excellent line up of presentations this year, thanks to the tireless effort of our Conference Committee, Board of Directors and Executive Director. It is our intention that this conference help you to gain new insights, make new connections, and contribute to the mission of having the best forensic mental health treatment in the country.

I'm sure you have all noticed the reports of California's **\$16 billion budget deficit**. The impact of this deficit is already beginning to affect forensic mental health programs and services. **Your decision to support FMHAC is perhaps more important than ever.** This conference is the place where we band together as a unit and find a common voice. FMHAC has invested in the Association's infrastructure to **carry that voice to key decision makers** and we need your continued support to make sure our voice continues to be heard.

Collectively, we are among those who understand that neglecting forensic mental health programs have costs well beyond the immediate impact of program reductions. Our programs protect our communities, and do so in ways that respect and value all human beings and their fundamental needs. We cannot afford as a society to fail in the provision of these services, resulting in more victims and human tragedy.

Your participation in the association is truly important and **makes a difference**. Please consider doing the following:

- Join the Association each year and attend the annual conference.
- Recruit other professionals to do the same.
- Become a sustaining member of FMHAC.
- Join a committee –
 1. Help make the conference top notch in the Conference Committee,
 2. Help track legislation and craft Association opinions on the Public Policy Committee,
 3. Help address health issues among those we serve on our Health Committee,
 4. Suggest another committee to the Board that you and others believe to be important to field of forensic mental health.
- Join the speaker's bureau – make yourself a resource for constituents around the State.
- Submit a proposal for presentation at the conference.

Enjoy your time in the Seaside/Monterey area! I look forward to our interactions over the next few days.

Kenneth A. Carabello, LCSW
President

Reminders

- Please wear your name badges throughout the conference. This will be your entrance pass to all workshops and social events. Lost badges must be replaced at the FMHAC registration table.
- Please take a moment to complete your conference evaluation form, even if you are not seeking CEUs. The Board of Directors and Planning Committee take into consideration all requests and suggestions when planning for next year's conference.
- Remember to pick up your Continuing Education Certificates. The pick up times and locations are listed on the Continuing Education page of the Program.
- Check out time at the Embassy Suites is 12:00 noon.

PRESENTER SPOTLIGHT



Mark L. Willenbring, MD

Dr. Willenbring speaks internationally on evidence-based practice relating to substance abuse and mental health treatment. He is Director of the Treatment and Recovery Research Division of the National Institute on Alcohol Abuse and Alcoholism, part of the National Institutes of Health. He oversees a broad-based effort within NIAAA to support the development and clinical testing of new medications for alcohol dependence and has extensive knowledge of the issues at the intersection of substance abuse, mental health and forensics. Prior to his current position, Dr. Willenbring worked for many years at the Veteran's Administration Medical Center in Minneapolis, MN, including in the Section of Dual Diagnosis and Other Special Addiction Programs.

Dr. Willenbring is presenting our Wrap Up workshop titled *Assessment and Treatment Issues in Substance Abuse and Mental Health Disorders*. Read more about him in Presenter Biographies.

TABLE OF CONTENTS

Pre-Conference

2:00 pm	Criminal Investigative Analysis John Douglas, EdD	1
---------	--	---

Wednesday

10:00 am	Council on Mentally Ill Offenders Open Meeting	1
12:30 pm	Registration	1
5:15 pm	FMHAC Business Meeting and Elections	1
7:00 pm	Welcome/Housekeeping	2
	Student Scholarships West and Rossiter Award Recipients COMIO Best Practices Awards Keynote - Judge Lawrence K. Karlton	
9:00 pm	Reception	2

Thursday

	Morning Workshops	3
	Afternoon Workshops	7
8:30 pm	AACFP Reception	10

Friday

9:00 am	Assessment and Treatment Issues in Substance Abuse and Mental Health Disorders Mark Willenbring, MD	11
	Continuing Education Information	13
	Workshop Location Quick Check	back

10:00 am

STATE COUNCIL ON MENTALLY ILL OFFENDERS Open Meeting



Chairperson

James Tilton, Secretary, California Department of Corrections and Rehabilitation

Vice Chairperson

Stephen Mayberg, PhD, Director, California Department of Mental Health

12:30 - 6:00pm **REGISTRATION**

Main Lobby

FMHAC MERCHANDISE FOR SALE!

2:00 pm - 5 pm **PRE-CONFERENCE (3.0 CE hours)**

Salons DEFG

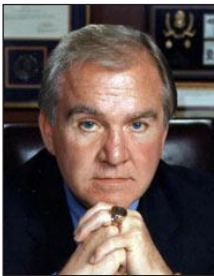
MCEP/CEU

STC 1 & 2

POST pending

**CRIMINAL INVESTIGATIVE ANALYSIS FROM THE CRIME
SCENE TO THE COURTROOM**

John Douglas, EdD, former FBI Profiler



This course, designed for criminal investigators, forensic scientists, and behaviorists, primarily focuses on an “investigative perspective” based upon practical FBI research of violent offenders by the course instructor and former colleagues. The course focuses on analysis of crime scenes, particularly homicide, and the characteristics of various types of offenders. Investigative techniques including Criminal Investigative Analysis (profiling), proactive techniques, and interview/interrogation will be discussed. *Please note: photographs from real crime scenes will be presented.*

5:15 pm

Salons DEFG

FMHAC BUSINESS MEETING

All Association members are encouraged to attend. Non-members are welcome but only current members may vote.

Board Vacancies

- Director of Conference
- Director of Education
- Secretary

7:00 pm

Salons DEFG

WELCOME AND INTRODUCTIONS

Kenneth Carabello, LCSW, President, Forensic Mental Health Association of California

FMHAC Student Scholarships

- Working Scholarship
- Financial Scholarship

FMHAC Awards

- Christine M. West Award
- William T. Rossiter Award for Outstanding Achievement in Forensic Mental Health

State Council on Mentally Ill Offenders

- Best Practices Awards

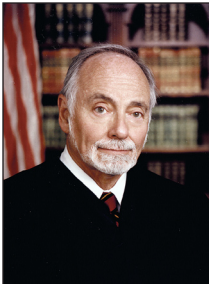
Salons DEFG

CEU Only

KEYNOTE ADDRESS (1.0 CE hour)

Honorable Lawrence K. Karlton

US District Court



Honorable Lawrence Karlton has been Chief Judge in Federal District Court since 1983 and received Senior Status in 2000. Judge Karlton maintains a full caseload and presided over a law suit filed against the Department of Corrections and Rehabilitation and the Office of the Governor, resulting in a set of six components for the mental health care system within the Department of Corrections and Rehabilitation.

Prior to being appointed to the federal bench, Judge Karlton was a Judge of the Superior Court of the State of California for the County of Sacramento, appointed by Governor Jerry Brown in 1976.

9:00 pm

Atrium

FMHAC RECEPTION

Wine and Hors d'Oeuvres

Special thanks to the American Association for Correctional and Forensic Psychology for sponsoring this reception.

7:30 - 8:30 am **REGISTRATION**

Main Lobby

Break-out Workshops

8:30 - 10:00 am (1.5 CE hrs)

1. Salon D **PART 1 ETHICAL CHALLENGES FOR MENTAL HEALTH PROVIDERS IN CHANGING MENTAL HEALTH DELIVERY SYSTEMS (License required training, 3 hours)**
CEU
MCEP
Stephen Behnke, JD, PhD, Director, Office of Ethics, American Psychological Association

This presentation focuses on ethical challenges faced by mental health professionals providing services to patients in correctional and community mandated programs. It will address issues related to limits of confidentiality, duty to warn and dual relationships. This is a 3 hour class and fulfills the biennial license required law & ethics training (6 hours are required for those licensed with the BBS).
2. Salon AB **A STUDY OF SUICIDE RISK IN PSYCHIATRICALY HOSPITALIZED INCARCERATED PATIENTS**
CEU
MCEP
Robert Horon, PhD, Senior Psychologist, DMH Vacaville Psychiatric Program
Juliana Rohrer, PhD, Psychologist, DMH Vacaville Psychiatric Program
Tiffany Barr, PhD, Postdoc Psychology Fellow, DMH Vacaville Psychiatric Program
Todd McManus, PhD, Postdoc Psychology Fellow, DMH Vacaville Psychiatric Program

This presentation reviews data on the prevalence of suicide in correctional samples with comment on how correctional and community samples differ and converge regarding suicide risk, reviews measures selected for the suicide risk battery, discusses interpretation of these measures and initial results from data collected thus far. It also comments on designing suicide risk assessment practices for correctional populations.
3. Salon C **PART 1 APPLICATION OF PARADOXICAL STRATEGIES (3 hrs)**
CEU
MCEP
Steven Berman, PhD, Psychologist, Patton State Hospital

This presentation discusses paradoxical interventions in a variety of forensic contexts, ranging from the treatment of paranoia, depression, delusions, hallucinations, interpersonal conflict, and violence against self and others. *As requested by attendees, this is an extended version of Dr. Berman's presentation from the 2007 conference.*

4. Salon
EFG
CEU
MCEP
STC 1
POST
pending

INTEGRATING MENTAL HEALTH AND CRIMINAL JUSTICE: A MODEL OF COLLABORATION THAT WORKS

Michael Kennedy, MFT, Section Manager, Forensic and Special Services, Sonoma County Department of Health Services

Christina Barasch, LCSW, Program Manager, CONREP and FACT Programs, Sonoma County Dept. of Health Services

Stephany L. Joy, JD, Commissioner, Sonoma County Superior Court

John Abrahams, JD, Public Defender, Sonoma County Public Defender's Office

Joan Risse, JD, Chief Deputy District Attorney, Sonoma District Attorney's Office

Steven S. Ranish, PhD, Court Evaluator, Sonoma County Department of Health Services

Robert Turner, Deputy Probation Officer, Sonoma County Adult Probation

Panel members will discuss several new programs, showcasing Sonoma County's attempt to develop comprehensive, individualized services for mentally ill offenders while strengthening the interface between mental health and the criminal justice system. The panel will discuss MHSA funding of SCMH to re-create a Forensic Assertive Community Treatment program and a Mental Health Court. Panelists will discuss the challenges, strategies, successes, and practical recommendations related to coordination between the Criminal Justice and the Mental Health Systems.

5. Seaside
Ballroom
CEU
MCEP
STC 2

MAKING 'DUTY TO WARN' MANDATES WORK IN JAIL SETTINGS

Malliga Battar, PhD, Clinician, Maguire Correctional Facility

Lt. Gregory Eatmon, Watch Commander, San Mateo County Correctional Facility

Tarasoff and other 'duty to warn' mandates determine how mental health staff must respond when persons communicate threats of physical harm against others. This presentation reviews those decisions which mandate or govern 'duty to warn' situations. It focuses on methods of implementing those decisions in a correctional facility, emphasizing the need for cooperation with custody staff and the advantages of utilizing their expanded resources. Case scenarios and a model policy are presented.

10:00 am **COFFEE BREAK**
FMHAC MERCHANDISE FOR SALE!

10:15 - 11:45 am (1.5 CE hrs)

1. Salon D **PART 2 ETHICAL CHALLENGES FOR MENTAL HEALTH PROVIDERS**
CEU **IN CHANGING MENTAL HEALTH DELIVERY SYSTEMS (License**
MCEP **required training, 3 hours)**

Stephen Behnke, JD, PhD, Director, Office of Ethics, American Psychological Association

This presentation focuses on ethical challenges faced by mental health professionals providing services to patients in correctional and community mandated programs. It will address issues related to limits of confidentiality, duty to warn and dual relationships. This is a 3 hour class and fulfills the biennial license required law & ethics training (6 hours are required for those licensed with the BBS).

2. Salon EFG **THE ASSESSMENT AND MANAGEMENT OF VIOLENCE IN MENTAL**
CEU **HEALTH**
MCEP **David Williamson, MD**, CEO, Violence Prevention Group, LLC

This presentation identifies causes of violent behavior in mental health treatment programs and describe the roles of the mental health professional and law enforcement officers in managing violence. An assessment algorithm will be presented along with a portfolio of responses appropriate for each type of violence, with an emphasis on prevention. A review of clinical interventions includes discussion of aspects of program design, intake screening, behavioral techniques, and medication.

3. Salon C **PART 2 APPLICATION OF PARADOXICAL STRATEGIES (3 hour**
CEU **session)**
MCEP

Steven Berman, PhD, Psychologist, Patton State Hospital

This presentation discusses paradoxical interventions in a variety of forensic contexts, ranging from the treatment of paranoia, depression, delusions, hallucinations, interpersonal conflict, and violence against self and others. *As requested by attendees, this is an extended version of Dr. Berman's presentation from the 2007 conference.*

4. Salon AB **REHABILITATION AND RE-ENTRY: NEW HOPE FOR INMATES**
CEU
MCEP
STC 1
Robin Dezember, JD, MPA, Chief Deputy Secretary, Correctional Health Care, California Department of Corrections and Rehabilitation
Betty Sutton, PhD, Chief Psychologist, Practitioner Development Unit, Mental Health Program, California Department of Corrections and Rehabilitation

Assembly Bill 900 directs the California Department of Corrections and Rehabilitation to reduce over-crowding and to create 16,000 secure re-entry beds, specifically designed to reduce crime and enhance public safety. This provides a unique opportunity for collaboration to determine and implement best practices for maximizing the success of individuals who require treatment for mental illness as they join families and communities after incarceration.

5. Seaside Ballroom **PRISON GANGS AND DISRUPTIVE GROUPS: CHALLENGES POSED FOR MENTAL HEALTH PROVIDERS**
CEU
MCEP
STC 2
POST
pending
Chris Beletsis, PhD, Senior Psychologist Supervisor, R.J. Donovan Correctional Facility

This presentation provides an overview of the prison gangs and disruptive groups most likely to be seen in the California State Prison system. The focus will be on increasing knowledge about gangs, gang politics, and considerations for mental health treatment. Topics will also include: tattoos, terminology, gang alliances and enemies, safety concerns, secondary gains, illegal activities, administrative segregation and security housing units.

FMHAC thanks our 2008 Exhibitors

Argosy University
AstraZeneca
Atascadero State Hospital
CDCR

FMHAC Health Committee
Eli Lilly & Co.
Janssen Pharmaceutica
Salinas Valley Psychiatric Program

11:45 am **LUNCH**

1:30 - 3:00 pm (1.5 CE hrs)

1. Salon D **PART 1 TOPICS IN FORENSIC ASSESSMENT: AN UPDATE (3 hour session)**
CEU

MCEP

Philip Erdberg, PhD, Assistant Clinical Professor, UCSF School of Medicine

This workshop provides an update on several current topics in forensic assessment including a discussion of validity issues, malingering, other forms of impression management and an update on research and practice with severely psychopathic individuals.

2. Salon AB **THE REALITIES OF ASSESSING SUICIDE RISK: A RESEARCH REPORT ON THE VALIDITY AND UTILITY OF A JAIL SUICIDE RISK ASSESSMENT INSTRUMENT**
CEU

MCEP

STC 1

Lyn Mangiameli, PhD, Psychologist, San Mateo Correctional Health Services, CogniMetrix

Richard Hayward, PhD, Program Manager, San Mateo Correctional Health Services

This is a report of the development, implementation, and efforts to validate a suicide risk rating scale for jail inmates. The discussion emphasizes research findings obtained from a sample of county jail inmates and the pragmatic implications of those findings with respect to suicide prevention and safety cell usage. Discussion includes inter-rater reliability, temporal stability and consistency over multiple incarcerations, the problem of face validity and the scale's association with other psychological measures.

3. Seaside **GEEL, BELGIUM: A MODEL OF 'COMMUNITY RECOVERY'**
Ballroom
CEU

MCEP

In the 13th century, mentally ill pilgrims sought religious healing in Geel, Belgium. When the church overflowed, citizens hosted pilgrims as "boarders." Foster family care still exists as a part of modern mental health services there, allowing community integration of individuals with mental illness. Whereas the recovery model of treatment suggests that consumers can live successfully with the realities of mental illness, "community recovery" suggests that communities too can live successfully with the realities of mental illness. Implications for forensic issues and community acceptance of those with mental illness are discussed.

4. Salon
EFG
CEU
MCEP
STC 2

WHAT HAVE THEY DONE TO US NOW? A REVIEW OF NEW LAWS AND COURT CASES THAT AFFECT FORENSIC MENTAL HEALTH SERVICES

David Meyer, JD, Clinical Professor/Research Scholar, Institute of Psychiatry, Law and Behavioral Sciences, USC Keck School of Medicine

This presentation looks at current appellate court cases and changes in statutes that effect practice and treatment of mentally ill individuals. The impact on forensic service providers is reviewed and changes in statutes and appellate decisions often address issues related to assessment, treatment, medication and voluntary and involuntary treatment of mentally ill in correction institutions, state mental health hospitals and judicial evaluations.

5. Salon C
CEU
MCEP
POST
pending

WORKING WITH CALIFORNIA'S MOST DIFFICULT YOUTH

James Telander, PsyD, Chief Psychologist, CDCR-DJJ Headquarters Reform Unit

Elaine Stenoski, MSW, Program Administrator, CDCR-DJJ, Preston Youth Correctional Facility

Shortly before the turn of the century, the California Youth Authority began to recognize some of the difficulties they were facing in dealing with some of their most difficult youth and decided to start a program to focus on a population which was heavily underserved at that time; disruptive and violent youth with significant mental health issues. This session focuses on the development of the program, program description, the target population, some of the difficulties and successes since its conception and the focus for the future.



AACFP Reception

Join us tonight at a dessert reception sponsored by the American Association for Correctional and Forensic Psychology!

March 20, 2008
8:30 - 10:00 pm
Embassy Suites Atrium

3:00 pm

COFFEE BREAK

FMHAC MERCHANDISE FOR SALE!

3:15 - 4:45 pm (1.5 CE hrs)

1. Salon D **PART 2 TOPICS IN FORENSIC ASSESSMENT: AN UPDATE (3 hour session)**

CEU
MCEP

Philip Erdberg, PhD, Assistant Clinical Professor, UCSF School of Medicine

This workshop provides an update on several current topics in forensic assessment including a discussion of validity issues, malingering, other forms of impression management and an update on research and practice with severely psychopathic individuals.

2. Salon AB **TREATING MALINGERING IN AN ACUTE CARE SETTING**

CEU
MCEP

Judith Herman, PhD, Psychologist, CSP-Solano
Elaina M. Jannell, PhD, Psychologist, CSP-Solano

Most of us who work in the field of Corrections have to deal with the problem of malingering. It can often be frustrating and discouraging to deal with these inmates when there are so many others who need our help, particularly in an acute care setting. This workshop is designed to help the treatment team identify malingering, understand its function and respond to it in such a way that we reduce the use of malingering in our institutions.

3. Salon C **UNDERSTANDING POLYTRAUMA: THE DIAGNOSTIC CONUNDRUM OF CO-EXISTING MILD TBI AND PTSD**

CEU
MCEP
STC 1

Jeff Kixmiller, MD, Director, Cognitive Rehabilitation Program, VA Northern California Health Care System; Adjunct Clinical Faculty, Department of Neurology, School of Medicine, UC Davis

Alycia Barlow, PhD, Neuropsychology Postdoctoral Fellow, VA Northern California Health Care System

This workshop discusses the polytrauma presentation of returning veterans from Operation Iraqi Freedom/Operation Enduring Freedom (OIF/OEF) focusing on both recovery from mild Traumatic Brain Injury (mTBI) and development of combat related Post Traumatic Stress Disorder (PTSD). A special emphasis will be placed on the diagnostic complexity of veterans with co-morbid mTBI and PTSD. Current trends in assessment, treatment approaches, and case studies will be provided.

4. Salon
EFG
CEU
MCEP

CALIFORNIA STATE HOSPITAL ENHANCEMENT PLAN

Carmen Caruso, MA, Clinical Administrator, Napa State Hospital

Charlie Joslin, RN, Clinical Administrator, Atascadero State Hospital

Mike Nunley, RN, Standards Compliance Coordinator/Director, Metropolitan State Hospital

Gari-Lyn Richardson, RN, Standards Compliance Director, Patton State Hospital

The California Department of Mental Health (DMH) is currently in the process of implementing the Recovery Model at all five State Hospitals. A comprehensive “Enhancement Plan” was negotiated with the United States Department of Justice (USDOJ). A Court Monitor and team of experts agreed upon by DMH and USDOJ are conducting focused reviews at each hospital to monitor the progress. This presentation provides an overview of the Recovery Model, the requirements of the Enhancement Plan and the tremendous challenges each hospital faces with the implementation process.

5. Seaside
Ballroom
CEU
MCEP
STC 2
POST
pending

FROM ARREST TO ADVOCACY: COMMUNITY BASED POLICING TO DIRECT MENTALLY ILL/HOMELESS INDIVIDUALS TO TREATMENT, NOT JAIL

Officer Marci Atkins, Patrol Officer/Homeless Advocate, San Bernardino Police Department

Isaac Jackson, San Bernardino County Department of Behavioral Health

This presentation focuses on how a law enforcement program works with local public and community based programs to facilitate the referral of mentally ill and homeless individuals to treatment programs and needed services to prevent arrest and incarceration. The presenters discuss educational programs developed by the law enforcement agency to teach chronic mentally ill/homeless individuals to use police services to get help, interact with law enforcement and prevent becoming a victim. A law enforcement crisis intervention and training program for law enforcement officers is also reviewed.

8:30 - 10:00 pm **AACFP RECEPTION**

Atrium

Wine and Desserts

Reminder: Room check out at the Embassy Suites is 12:00 noon.

9 am -12 pm
Salons DEFG

CEU
MCEP
STC 1 & 2
POST pending

ASSESSMENT AND TREATMENT ISSUES IN SUBSTANCE ABUSE AND MENTAL HEALTH DISORDERS (3 CE hours)

Mark Willenbring, MD, Director, Division of Treatment and Recovery Research, National Institute on Alcohol Abuse and Alcoholism

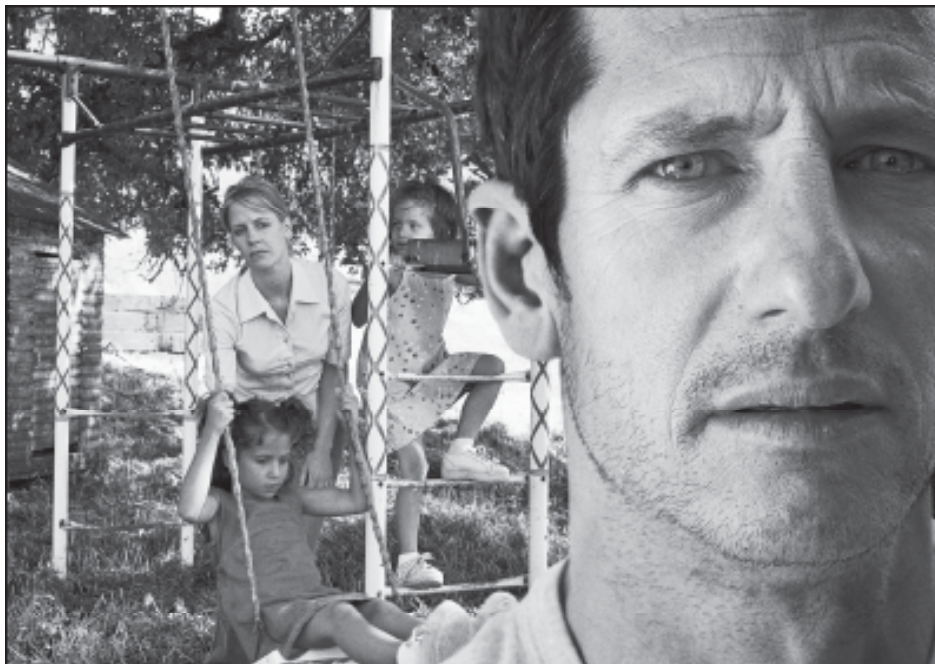
This presentation addresses evolving findings and epidemiology of substance abuse disorders and mental disorders. In addition to addressing evidence based treatments related to substance abuse, mental health and criminal justice, the presentation teaches the participants to assess alcohol disorders and gives criteria for substance abuse disorders and medications that are used to treat substance abuse disorders. Furthermore, this presentation identifies ways to increase interaction between substance abuse providers and mental health treatment providers.

Thank you to the 2008 FMHAC Members!

Proud to support the Forensic Mental Health Association of California!

AstraZeneca





Open Access: for the patients, for the people

All too often, people who depend on public assistance are denied access to newer, safer, and more effective treatments for mental illness. This inability to obtain the treatment they need can trigger a pattern of deterioration — becoming unemployed, being hospitalized, imprisoned, and often ending up homeless. This destructive cycle is costly for taxpayers and devastating to the families of people with mental illness.

That's why Eli Lilly and Company continues to support open and unrestricted access to all available treatments for mental illness.

Scientific advances have resulted in medications that are effective in delaying relapse¹, provide more effective symptom control, have fewer side effects, and offer longer-term treatment than in the past.

Give them access to the treatments they need, and give them hope for taking their lives back.

¹Paroxetine NEX, Risperidone CR, Haloperidol PK. Determinants of medication compliance in schizophrenia: empirical and clinical findings. *Schizophrenia Bull.* 1997;23:437-461.

Lilly
Advances That Matter.

CONTINUING

CEU

BBS/BRN (MFTs, LCSWs, RNs, NPs, LVNs, Psych. Techs): up to 13 units (all workshops approved).

BBS provider #PCE 4800

BRN provider #CEP 5965

1. CEU sign in/out form (duplicate form). One sign in/out form will be provided for the entire conference. Make sure to obtain the initials of the designated person at each workshop you attend and a member of the FMHAC Board signs the form at the end of the conference. Maintain your copy.

2. Evaluation form

Pick up your certificate of attendance at the registration table during the pick up hours.

MCEP

Psychologist: up to 12 units, see courses marked MCEP
MCEPAA approved #FOR005-0068-000

Please complete the following forms and turn them in at the registration table in exchange for your certificate of attendance.

1. CEU sign in/out form (duplicate form). One sign in/out form will be provided for the entire conference. Make sure to obtain the initials of the designated person at each workshop you attend and a member of the FMHAC Board signs the form at the end of the conference. Maintain your copy.

2. Evaluation form

Pick up your certificate of attendance at the registration table during the pick up hours.

EDUCATION

STC

Board of Corrections: up to 12 units, see courses marked STC.

STC track 1 certification # 0004-038744

STC track 2 certification # 0004-038746

Please complete the following forms and turn them in at the registration table in exchange for your certificate of attendance.

1. Board of Corrections sign in sheets (for each class you attend).
2. Board of Corrections evaluation form.
3. Training manager's name, phone and mailing address.

Pick up your certificate of attendance at the registration table during the pick up hours.

POST

Police Officer Standards and Training: see courses marked POST. POST credits are currently pending. Once the application is approved, the number of credits and certification number will be posted on the FMHAC website, www.fmhac.net

Please make sure to sign in at each POST designated class you attend in order to receive credit.

Pick up your certificate of attendance at the registration table during the pick up hours.

CEU CERTIFICATE PICK UP HOURS

Thursday	Please make arrangements with FMHAC to pick up your certificate if you are not able to pick it up Friday.
Friday	12:00 - 1:00 pm Registration Table Main Lobby

WORKSHOP LOCATION QUICK CHECK

WEDNESDAY

- 2 - 5pm Salons DEFG **Douglas**: Criminal Investigative Analysis
7pm Salons DEFG Keynote: US District Court **Judge L. Karlton**
9 pm Atrium Reception

THURSDAY

8:30 am - 10:00 am (1.5 hrs)

1. Salon D **Behnke**: Ethical Challenges for MH Providers Part 1
2. Salon AB **Horon**: Study of Suicide Risk
3. Salon C **Berman**: Application of Paradoxical Strategies Part 1
4. Salon EFG **Kennedy**: Integrating Mental Health and Criminal Justice
5. Seaside Brm **Battar**: Making 'Duty to Warn' Mandates Work in Jail

10:15 am - 11:45 am (1.5 hrs)

1. Salon D **Behnke**: Ethical Challenges for MH Providers Part 2
2. Salon EFG **Williamson**: Assmt and Mgmt of Violence in Mental Health
3. Salon C **Berman**: Application of Paradoxical Strategies Part 2
4. Salon AB **Dezember**: Rehabilitation and Re-Entry
5. Seaside Brm **Beletsis**: Prison Gangs and Disruptive Groups

1:30 pm - 3:00 pm (1.5 hrs)

1. Salon D **Erdberg**: Topics in Forensic Assessment Part 1
2. Salon AB **Mangiameli**: Realities of Assessing Suicide Risk
3. Seaside Brm **Goldstein**: Geel, Belgium: Model of 'Community Recovery'
4. Salon EFG **Meyer**: Review of New Laws and Court Cases
5. Salon C **Telander**: Working with California's Most Difficult Youth

3:00 pm - 4:45 pm (1.5 hrs)

1. Salon D **Erdberg**: Topics in Forensic Assessment Part 2
2. Salon AB **Herman**: Treating Malingering in an Acute Care Setting
3. Salon C **Kixmiller**: Understanding Polytrauma: Mild TBI and PTSD
4. Salon EFG **Caruso**: California State Hospital Enhancement Plan
5. Seaside Brm **Atkins**: Directing MI/ Homeless Individuals to Treatment

8:30 - 10 pm AACFP Reception

FRIDAY

9:00 am - 12:00 pm Wrap Up

- Salons DEFG **Willenbring**: Assmt, Tmt Issues in SA and MH Disorders

Please consult the presentation details for CE information.