

44th ANNUAL FMHAC CONFERENCE

March 13-15, 2019

Hyatt Regency Resort & Spa
Monterey, CA



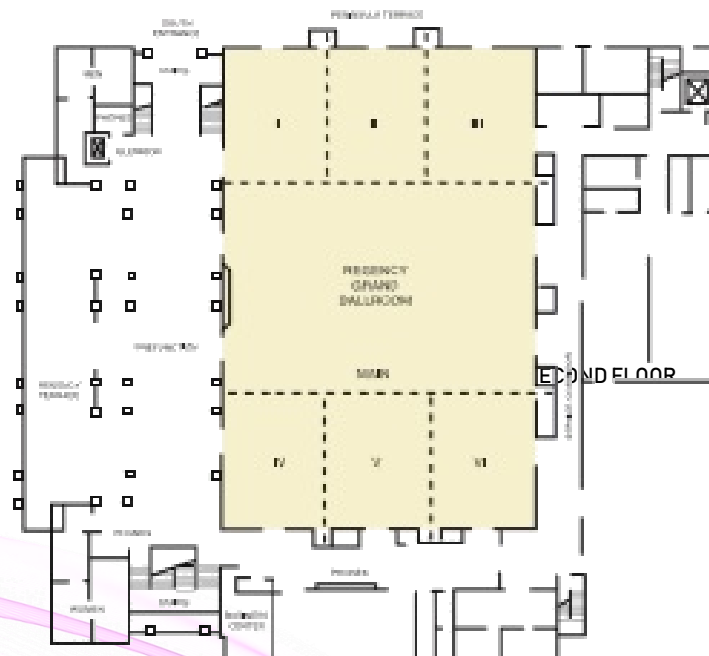
THE FORENSIC MENTAL HEALTH ASSOCIATION OF CALIFORNIA

Hyatt Regency Meeting Rooms

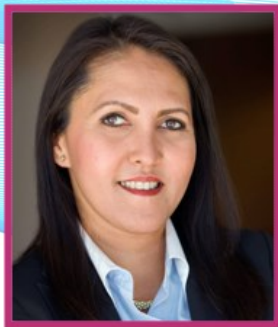
FIRST FLOOR



SECOND FLOOR



WELCOME LETTER



On behalf of the entire FMHAC Board, Staff, Planning Committee, and Volunteers, it is with great pleasure I welcome you to the 44th FMHAC Annual Conference. We have worked extremely hard to put together a program with Education and Networking events we are sure you will enjoy.

Our three-day conference kicks off on Tuesday, March 13th with a full slate of educational sessions including an Opening Session on Recovery and Re-Entry of Formerly Incarcerated Women, followed by a Keynote Presentation on Substance Use and Offenders: From High to Homicidal. Don't forget to join us at the Welcome Reception and network with your peers.

Our second day of educational sessions begin at 9:00 am through 12:15 pm. Lunch will be provided on this day from 12:15–1:15 pm. Afternoon sessions will be held from 1:15–4:45 pm.

I would like to personally invite you to join me and the FMHAC Board of Directors at our FMHAC Business Meeting at 5:30 pm.

Finally, on Friday, March 15th, we will close out the conference with a presentation from the Northern California Innocence Project (NCIP) on Mental Consequences of Wrongful Conviction. They will be joined by two Exonerees who will discuss their particular cases and the psychological implications of wrongful incarceration.

I wish you an excellent and memorable conference experience. Welcome to the Hyatt Regency Resort & Spa in beautiful Monterey, California.

A handwritten signature in black ink, appearing to read 'Catherina'.

Catherina Isidro
FMHAC Executive Director

A LETTER FROM THE PRESIDENT



I am so excited to be back in Monterey at the FMHAC Annual Conference with you! I have had the good fortune to attend this conference since the early 90's. During that time, this conference has been a highlight of my year. I find great comfort in meeting with a group of people who understand what I do because they are involved in the same general field; people who are striving to do their jobs to the best of their abilities, and with whom I can create ongoing supportive relationships. This has always been a much-needed break from the day to day grind and a chance to restore my morale and motivation.

Plus, I get to hear great presentations that inspire new ideas. I've always been struck by the fact that sometimes the best ideas are from the presentations I least suspected would give them to me. It's one of the unique features of this conference – there is a wide range of professional classifications and fields that attend and present at this conference. The chance to hear of the ideas and successes from other areas of forensic mental health provide cross-seeding of ideas and best practices. Branch out and explore a little and you might be richly rewarded.

We've had a great year at FMHAC. I'm so grateful for the hard work and devotion of Catherina, Morgan, Kit and our board and committee members. An excellent conference has been prepared this year to inspire our participation. In addition, our Forensic 101 remote trainings have been very well received and we will be continuing to expand. We continue to generate new ideas and strategies to carry out our vision of a well-trained system of professionals throughout the criminal justice system providing high quality services to mentally ill individuals to allow recovery, reduce crime, and strengthen communities. I'd like to invite you to get involved in the association by getting all you can from this conference and consider joining a committee or running for board positions. It has brought great professional development for me, and I'm confident it will be a rewarding experience for you.

A handwritten signature in black ink, appearing to read 'Ken'.

Ken Carabello, MSW
FMHAC Board President

BOARD OF DIRECTORS

President
Ken Carabello, MSW

Secretary
Cynthia Lermond, PsyD

Director of Conference
Tom Granucci, LCSW

Vice President
Sam Knudsen, JD

Treasurer
Carrie Gustafson

Director of Education
Anna Kafka, PsyD

CONFERENCE PLANNING COMMITTEE

Chair
Tom Granucci, LCSW

Dick Conklin, LCSW

Norbert Ralph, PhD, MPH

Anna Kafka, PsyD

James Rokop, PhD

Michael Abacherli, JD

Sam Knudsen, JD

Danny Sciacqua, MA, LPT, CADCI

STAFF

Executive Director
Catherina Isidro

Events & Communications Director
Morgan Grabau

THANK YOU! 2019 FMHAC SUSTAINING MEMBERS

Michael Aberlachi
Sheri Bath
Kenneth Carabello
Richard Conklin
Gina Gonzales
Harry Goldberg
Carrie Gustafson
Robert Hart
Anna Kafka

Sam Knudsen
Cynthia Lermond
Robert Ochs
Lindsay Weston
Patricia Ordorica
Munir Sewani
Douglas Smith
Alan Stillman
Yelena Sverdlova

As ongoing supporters of the Association, Sustaining Members get special treatment at the conference including upgraded hotel rooms and personal thank you notes from FMHAC!

SCHEDULE AT A GLANCE

WEDNESDAY, March 13

10:00 am

12:30—1:00 pm

1:00—2:30 pm

2:30 – 2:45 pm

2:45—6:00 pm

4:15—4:30 pm

6:00—7:00 pm

6:00 pm

Registration Opens

President's Remarks

- Ken Carabello, MSW; FMHAC President

Opening Presentation

Recovery and Re-entry of Formerly Incarcerated Women

- Susan Burton

BREAK

Keynote Presentation

Substance Use and Offenders: From High to Homicidal

- Charles Scott, MD

BREAK

Welcome Reception & Poster Presentation

Book Signing

- Susan Burton

THURSDAY, March 14

8:00 am

9:00—10:30 am

10:30—10:45 am

10:45 am—12:15 pm

12:15—1:15 pm

1:15—2:45 pm

2:45—3:00 pm

3:00—4:30 pm

4:45—5:45 pm

Registration Opens

Breakout Presentation 1

BREAK

Breakout Presentation 2

LUNCH

Breakout Presentation 3

BREAK

Breakout Presentation 4

FMHAC Business Meeting

FRIDAY, March 15

9:00 am—12:15 pm

10:30—10:45 am

Closing Presentation

Mental Consequences of Wrongful Convictions

- Kelley Fleming, JD
- Darwin Crabtree
- Gloria Killian

BREAK

CONFERENCE INFORMATION

MEALS

There are no food or meals provided except what is noted in the Program. Please plan accordingly.

COLLEGE REGISTRATION FORM

Please fill out the college registration form that was given to you when you checked in. They are submitted to the State of California which then provides funding for FMHAC, aiding us in providing the conference each year. It doesn't commit you to anything and it's an easy way for you to support FMHAC!

NOTICE BOARD

A notice board is located in the foyer - use it for such things as job announcements, group dinner invitations, upcoming events, or general networking!

CERTIFICATES OF ATTENDANCE

Certificates of attendance are included in your packet. Please review the requirements for CEs on page 22.

ELECTRONIC EVALUATION SURVEY

The conference evaluation is electronic and will be emailed to you on the last day of the conference. Thank you for filling it out!

COMPLIMENTARY RESORT BENEFITS

Receive these benefits when you stay at the Hyatt as an FMHAC Conference Attendee:

- ◇ Wifi in guest rooms
- ◇ Self & Valet Parking
- ◇ 10% discount at several shops as well as \$20 credit toward the coastal/nature hike at Hyatt Carmel Highlands
- ◇ Complimentary tennis court time
- ◇ Wine sample at the onsite tasting room
- ◇ Resort & Indoor Games
- ◇ Shoe shine

NAME BADGES

FMHAC requires that you wear your name badge at all times throughout the conference. This will be your entrance pass to all workshops and social events. Lost badges can be replaced at the FMHAC registration table.

Favorite Overall Poster

**Most Potential Impact in
Forensic Mental Health**

Reception & Poster Presentations
Wednesday, March 13 at 6:00pm
Regency IV/V/VI

Winners will be announced at lunch on
Thursday, March 14.

VOTE
for the
**Best
Posters!**

EXHIBITOR COMPANY LISTINGS

Aligned Telehealth

Alkermes

California Correctional Health Care Services

Department of State Hospitals—Atascadero

Department of State Hospitals—Coalinga

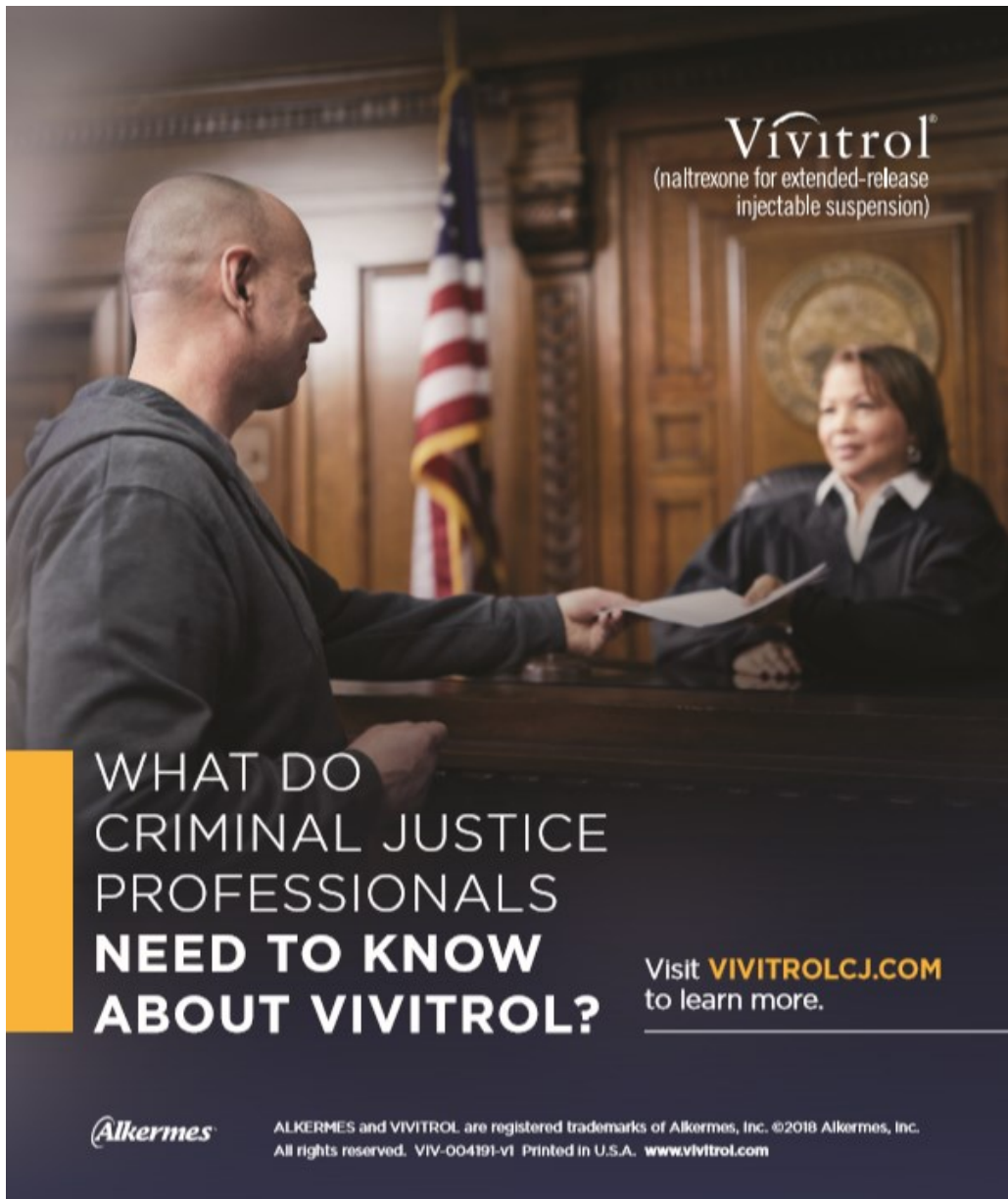
First Responder Support Network

Johnson & Johnson

Kern Behavioral Health & Recovery Services

Sunovion Pharmaceuticals

The Change Companies



Vivitrol[®]
(naltrexone for extended-release
injectable suspension)

**WHAT DO
CRIMINAL JUSTICE
PROFESSIONALS
NEED TO KNOW
ABOUT VIVITROL?**

Visit **VIVITROLCJ.COM**
to learn more.

Alkermes

ALKERMES and VIVITROL are registered trademarks of Alkermes, Inc. ©2018 Alkermes, Inc.
All rights reserved. VIV-004191-VI Printed in U.S.A. www.vivitrol.com

CONGRATULATIONS

WILLIAM T.
ROSSITER
AWARD

CHRISTINE
M. WEST
AWARD

2019 AWARD RECIPIENTS

CHRISTINE M. WEST AWARD

The Christine M. West Award recognizes significant contributions by dedicated individuals working in the field of Forensic Mental Health. This year, FMHAC honors Sheriff Bill Brown.

Sheriff Bill Brown

Bill Brown has served as Santa Barbara County's Sheriff-Coroner for the past 12 years. He was first elected on November 7, 2006, re-elected to a second term in June, 2010, re-elected to a third term in June, 2014, and re-elected again to a fourth term in June, 2018.

Sheriff Brown began his law enforcement career in 1977 with the Pacifica Police Department in the San Francisco Bay area. In 1980, he transferred to the Inglewood Police Department. He served that Los Angeles County community until 1992, when he was selected as chief of police for the City of Moscow in Idaho. In that position, he was responsible for overseeing police operations for both the City of Moscow and the University of Idaho. In 1995, Brown was selected as chief of police for the City of Lompoc, being only the eighth person to hold the title of police chief in that community since it incorporated in 1899. He led the Lompoc Police Department for the next 11 years until being elected to his present office.



Sheriff Brown received his master's degree in public administration from the University of Southern California in 1995. He was president of the 91st Class of the Delinquency Control Institute, and is a graduate of the Northwest Command College, the 169th Session of the FBI National Academy, and the 33rd Session of the FBI National Executive Institute. Sheriff Brown is a past president of the California State Sheriffs' Association and a past president of the California Police Chiefs' Association; as such, he is the only person to have ever held both positions. Since 2010 he has served as a Commissioner on the Mental Health Services Oversight and Accountability Commission for the State of California, and he leads Santa Barbara County's version of "Stepping Up," a National Initiative to Reduce the Number of Mentally Ill People in Jails. Sheriff Brown currently is Chairman of the Santa Barbara County Law Enforcement Chiefs (C.L.E.C.), and Executive Director of the Santa Barbara Regional Criminal Apprehension Team (S.B.R.C.A.T.).

Sheriff Brown and his wife, Donna, have been happily married for more than 38 years and have three grown children.

WILLIAM T. ROSSITER AWARD

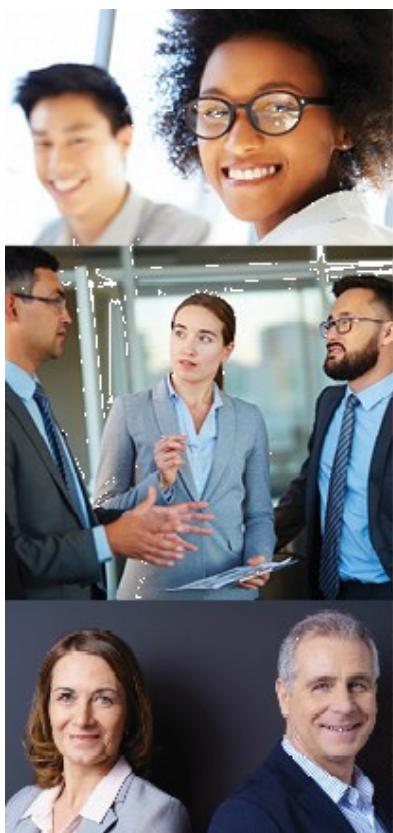
The William T. Rossiter Award honors an individual who has made, over a period of time, an exceptional global contribution to the field of Forensic Mental Health. This year, the award goes to Jackie Lacey.

District Attorney Jackie Lacey



District Attorney Jackie Lacey has spent most of her professional life as a prosecutor, manager and executive in the Los Angeles County District Attorney's Office. In 2012, she was sworn in as the 42nd District Attorney. She is the first woman and first African-American to serve as Los Angeles County District Attorney since the office was established in 1850. She is committed to safeguarding our children from human sex traffickers, our seniors from financial elder abuse and our communities from environmental crimes that threaten our health and our livelihood. District Attorney Lacey established the Conviction Review Unit to assess claims of actual innocence based on newly discovered evidence. She also appointed the office's first Professional Responsibility Advisor. As chair of the Criminal Justice Mental Health Project for Los Angeles County, she leads a multidisciplinary working group devoted to diverting people who are mentally ill out of the criminal justice system for nonviolent offenses. She

initiated an ambitious plan within her office to provide free training to first responders on how to safely de-escalate incidents involving people in a mental health crisis. A Los Angeles native and graduate of the University of Southern California Law School, she leads the largest local prosecutorial office in the nation.



Looking to practice quality mental health care in a stable, secure environment?

Clinical Social Workers

\$81,060 - \$103,104
annual salary (Licensed)

Working in conjunction with other team members, you will conduct assessments and summarize case information for use in diagnosis, treatment, and release; collaborate in the formulation of diagnoses; develop, monitor, and modify treatment plans as needed; document and evaluate patients' progress in treatment; and coordinate placement with community resources.

Clinical Psychologists

\$114,024 - \$127,296
annual salary (Licensed)

Working in conjunction with other team members, you will provide psychological assessment and treatment, crisis intervention, and discharge planning. Through your evidence-based individual and group interventions, our patients begin to develop skills to live independent, productive lives and improve their overall well-being.

In exchange for your efforts, we provide all of the stability that comes with employment with the State of California, including:

- 40-hour workweek
- State of CA pension that vests in five years
- Free on-site, in-person CEUs
- 401(k) and 457 retirement plans – tax defer up to \$48K per year
- And much more

Here, you'll be part of a robust, multidisciplinary team while enjoying the positive work-life balance you crave. Plus, with 35 locations throughout California, you're sure to find your perfect fit!

For more information, please call **Yusuf Lang** at (916) 691-5864 or email: Yusuf.Lang@cdcr.ca.gov. You may also apply online at www.cchcs.ca.gov.

Visit our table for more information



CALIFORNIA CORRECTIONAL
HEALTH CARE SERVICES



EDE

POSTER PRESENTATIONS

6:00—7:00 pm Wednesday, March 13

(Ballroom IV/V/VI)

VOTE
for the
Best
Posters!

THE DEVELOPMENT AND VALIDATION OF THE FALSE DISORDER PROBABILITY SCORE OF THE INVENTORY OF PROBLEMS-29

Cassie Brown, BA; PhD Student
Donald Vaglion, PhD
Luciano Giromini

The Inventory of Problems-29 (IOP-29) is a brief, 29-item, self-administered malingering measure designed to detect non-credible presentations of various mental disorders and neurocognitive symptoms. Its focal scale, the False Disorder Score (FDS) is a straightforward, understandable score that estimates the probability of a non-credible presentation. It is designed to be stable across different diagnoses. This poster summarizes the development, initial validation, and cross validation of the FDS with psychosis/schizophrenia, depression, and post-traumatic conditions. Comparisons to the Minnesota Multiphasic Personality Inventory (MMPI-2), the Personality Assessment Inventory (PAI), Structured Inventory of Malingered Symptomatology (SIMS) and the Test of Memory Malingering (TOMM) are also presented.

CONDITIONAL RELEASE REVOCATION IN INSANITY ACQUITTEES AND MENTALLY DISORDER OFFENDERS

Melinda DiCiro, PsyD

We compared factors related to revocation of conditional release (CONREP) of two groups: Not Guilty by Reason of Insanity (NGRI) Acquittes, directly committed to a state hospital after trial, and Mentally Disordered Offenders (MDO), committed after a prison sentence. We hypothesized that MDOs would have a higher rate of CONREP revocation and that MDOs would have greater "Big Eight" criminogenic needs (Bonta & Andrews, 2017) and lower clinical severity. We followed a group of NGRI and MDO patients discharged to CONREP (n=202). We compared CONREP-revoked to CONREP-retained MDO and NGRI patients on criminogenic and clinical risk factors. MDO's were more likely be revoked than NGRIs (OR 3.25). The groups did not differ on historical factors, other than hospital length of stay and antisocial personality indicators. Primary precipitants to revocation (in order) were psychiatric decompensation and treatment noncompliance, then substance abuse. Contrary to expectations, MDO's were more likely to be revoked for clinical decompensation, though not significantly so. Other factors, such as divergent hospital release criteria, CONREP incentives, and commitment criteria may explain differences.

INTRODUCING THE SEXUAL ATTITUDES AND BEHAVIOR INVENTORY WITH A SAMPLE OF APPLICANTS TO THE CATHOLIC SEMINARY

Sheri Dilone, PhD Student
Clark Clipson
Renee Prince
Donald Viglione, PhD

The Sexual Attitudes and Behavior Inventory (SABI) is a self-report instrument designed to assess the sexual history, interests, behaviors and attitudes of adult men ranging in age from 18 to 80. It can be used with the general population for clinical or research purposes, in suitability evaluations for various professions, or with men accused or convicted of a sexual offense. This comprehensive and detailed instrument contains 589 items and 40 scales addressing validity, self-image, relationships, childhood sexual experiences, cognitive distortions related to sexuality, as well as sexual functioning, orientation, and experiences. Similar instruments lack validity scales or norms, are not comprehensive, or can only be used with those accused or convicted of sexual offenses. To demonstrate, a small sample of applicants to the religious seminary is presented. With increasing demands on religious institutions to eliminate sexual abuse, the SABI can play an important role in these high-stakes evaluations.

IDENTIFYING GROUP DIFFERENCES BETWEEN MALTREATED YOUTH WHO SEXUALLY OFFEND AND THOSE WHO DO NOT

Caterina Pasquali, MA, Doctoral Student
Susan Clark, PhD
Donald Viglione, PhD

The present study explored various psychosocial factors that potentially discriminate between abused juvenile sexual offenders (JSOs) and a control group of adolescents exposed to similar maltreatment who do not sexually offend. Emotional and behavioral differences between JSOs and nonsexual offending (NSO) youth with similar abuse histories were examined to identify specific psychological factors that might be associated with sexual offending juvenile males. Antisocial traits, sexual deviancy and limited social competency were analyzed. Results may benefit the mental health community and enhance the available literature related to the understanding of the psychosocial factors associated with sexual offending behaviors in youths.

2019 BOOK LIST

BOOK SIGNING

**BECOMING MS. BURTON: FROM PRISON TO RECOVERY
TO LEADING THE FIGHT FOR INCARCERATED WOMEN**

Susan Burton

**A DEATH IN WHITE BEAR LAKE: THE TRUE CHRONICLE
OF AN ALL-AMERICAN TOWN**

Barry Siegel

COLUMBINE

Dave Cullen

**MINDHUNTER: INSIDE THE FBI'S ELITE SERIAL CRIME
UNIT**

John E. Douglas

Mark Olshaker

**MINDFULNESS-BASED SUBSTANCE ABUSE
TREATMENT FOR ADOLESCENTS**

Sam Himelstein, PhD

Stephen Saul

MURDER BY FAMILY

Kent Whitaker

**THE ROAD TO FREEDOM: A COMPRESHIVE
COMPETENCY-BASED WORKBOOK FOR SEXUAL
OFFENDERS IN TREATMENT**

Jill Levenson, PhD, LCSW

**THE GIFT OF FEAR: SURVIVAL SIGNALS THAT PROTECT US
FROM VIOLENCE**

Gavin De Becker

**THE HUMAN PREDATOR: A HISTORICAL CHRONICLE OF
SERIAL MURDER AND FORENSIC INVESTIGATION**

Katherine Ramsland

**DON'T FORGET TO
STOP BY AND CHECK
OUT THE FMHAC
MERCHANDISE STORE**

WEDNESDAY, MARCH 13

10:00 am—2:00 pm REGISTRATION

(Lobby)

12:30—1:00 pm President's Remarks

(Regency I/II/III/Main)

- Ken Carabello, MSW-FMHAC President

1:00—2:30 pm

(Regency I/II/III/Main)

RECOVERY AND RE-ENTRY OF FORMERLY INCARCERATED WOMEN

Susan Burton

1.5 CE hrs

CE: CPA/BBS/BRN/
POST

Susan Burton will share her personal story of how after the tragic accidental death of her five- year-old son, she turned to drugs and alcohol which led to nearly 20 years revolving through cycles of incarceration. Drawing on her personal experiences, she founded A New Way of Life Re-Entry Project (ANWOL) in Los Angeles in 1998 - dedicating her life to helping others break the cycle of incarceration. ANWOL provides resources such as housing, case management, employment, legal services, leadership development and community organizing on behalf of, and with, people who struggle to rebuild their lives after incarceration. Susan's presentation will include the topics of recovery from substance misuse, building re-entry programs and services for women and families, family reunification, women and trauma, sentencing disparities and advocacy.

2:30—2:45 pm

BREAK

2:45—6:00 pm

(Regency I/II/III/Main)

SUBSTANCE USE AND OFFENDERS: FROM HIGH TO HOMICIDAL

Charles Scott, MD

3.0 CE hrs

CE: CPA/BBS/BRN,
MCLE /POST

This presentation highlights key legal and medical issues related to offenders who misuse substances. Charles Scott will summarize landmark U.S. Supreme Court cases that have grappled with the relationship of substance use intoxication and psychosis to personal responsibility for one's criminal behavior. Key factors in distinguishing substance induced psychosis vs. psychosis secondary to a primary mental disorder will be highlighted. Charles Scott will highlight the relationship of alcohol, marijuana, stimulants, opiates, and other substances to criminal behavior. In addition, key factors impacting relapse risk will be reviewed, including evidence-based treatment approaches to substance use. Medication Assisted Treatments to help prevent relapse will be discussed. Specific bodily fluid testing methods will be noted to maximize chances for early detection and sobriety maintenance.

4:15—4:30 pm

BREAK

6:00—7:00 pm

(Regency IV/V/VI/
Lobby)

WELCOME RECEPTION & POSTER PRESENTATIONS

6:00—7:00 pm

(Lobby)

SUSAN BURTON BOOK SIGNING

TRACK LEGEND



Sex Offender



Clinical



Juvenile



Legal



Words to Deeds

THURSDAY, MARCH 14

8:00—8:30 am

REGISTRATION

9:00—10:30 am

BREAKOUT PRESENTATION 1

(Regency I/II/III)

INTERMEDIATE

1.5 CE hrs

CE: CPA/BBS/BRN/
MCLE/POST



(Big Sur)

INTRODUCTORY

1.5 CE hrs

CE: CPA/BBS/BRN/
POST



(Windjammer)

ADVANCED

1.5 CE hrs

CE: CPA/BBS/BRN/
MCLE/POST



ASSESSMENT OF DANGEROUSNESS FOR MDOs: A STRUCTURED APPROACH

Melinda DiCiro, PsyD

Trayci Dahl, PhD, ABPP, CTM;

Susan Napolitano, PhD;

Brandon Yakush, PsyD

This workshop will examine the use of structured risk assessments for the assessment of dangerousness in the Mentally Disordered Offender (MDO) civil commitment scheme. The pros and cons of actuarial, structured professional judgment, and clinical judgment approaches for MDO assessment will be discussed. The benefits and drawbacks of using of the HCR-20 V3 for this purpose will be examined. Application of this measure will be demonstrated with a case example.

TACTICAL MENTAL HEALTH

Nicole Vienna, PsyD

Ryan Vienna, ML

First Responders run toward danger when others run away. They work in high-risk occupations that involve a plethora of critical incidents. Being on the front line, working with a high-risk population and in critical Incidents can make first responders candidates for cumulative post-traumatic stress, secondary traumatic stress, anxiety, depression, and even burnout. Clinicians working with first responders need to be culturally competent when delivering clinical services. This workshop will combine first responder culture and tactical mental health skills. This presentation was developed by a husband and wife couple who have taken their collective experiences working the front lines on patrol and crisis intervention teams, in the jails and trauma, and combined it with their educational background in psychology and leadership to develop a set of mental health tools specifically for first responders that can be used to build resiliency and facilitate healing.

SEXUAL COERCION: FROM PERSUASION TO SADISM

Charles Flinton, PhD

Deirdre D'Orazio, PhD

This workshop is designed for researchers, forensic evaluators, judges, attorneys, and other professionals who seek to expand their knowledge and skills in identifying coercive-agonistic paraphilic disorders. The DSM-5 only defines one point on the coercive-agonistic spectrum with its description of Sexual Sadism Disorder. However, front-line clinicians (and some researchers) are well aware that coercive-agonistic-driven paraphilic disorders include a wide range of disorders that are currently allocated to the category of Other Specified Paraphilic Disorders (OSPD). The OSPD designation requires clinicians to describe/explain the disorder. This presentation specifically targets the improvement of professional skills for assessing the presence of paraphilic disorders along the coercive-agonistic continuum, and explaining it. This presentation will discuss the continuum of sexual preference and arousal involving various degrees of sexual-target dominance, (e.g., simple coaxing-compliance, obedience, submission, subjugation, fear, emotional anguish, physical pain, humiliation, etc.). Abnormal sexual interests in this domain are important risk factors that are commonly encountered in forensic assessment. Sadistic offenders often dominate this discussion. The goal of this presentation is to discuss a complete range of arousal patterns within this spectrum. Specifically, in addition to sadistic offenders, those offenders who are aroused by the use of power over their victims, e.g., repeated professional sexual misconduct violators (teachers, clergy, etc.), as well as those offenders who seek coercion through use of substances (e.g., alcohol, drugs, etc.), and those who are aroused by pain/suffering will be discussed. Presentation attendees will gain the knowledge to distinguish paraphilic disorders along the above-described continuum by integrating the sound use of objective assessment tools (e.g., penile plethysmograph, VRT, etc.), structured clinical interview approaches, and thoughtful document review. Attendees will leave the presentation with a comprehensive understanding of the existing current research on the topic, and its limitations. Strategies for communicating this research, and its application to specific cases will be presented. Significant focus will be on ruling out non-paraphilic causes/motivations for unusual sexual misconduct. Clinical and legal controversies of diagnosing Sexual Sadism and Other Specified Paraphilic Disorder will be discussed. This training will include case vignettes, video examples, audio Interviews, report excerpts, and testimony transcripts.

(Spyglass)

ADVANCED

1.5 CE hrs

CE: CPA/BBS/BRN/
MCLE/POST



TRANSFER EVALUATIONS: ASSESSING REHABILITATIVE POTENTIAL WITHIN THE JUVENILE JUSTICE SYSTEM

Francesca Lehman, PsyD

Doug Ugarkovich

This presentation will address the issue of rehabilitation of juvenile offenders in the juvenile justice system, within the context of recent changes to California law as to whether juvenile offenders are tried in adult court. Current standards and potential future changes in the law will be addressed. Additionally, changes to California's Division of Juvenile Justice's (DJJ) rehabilitative programming stemming from the Farrell Lawsuit reforms will be covered, with a particular emphasis on current rehabilitative programming for youth at DJJ. Finally, research applicable to youth's rehabilitative potential will be addressed, with a focus on research pertaining to biological immaturity.

(Regency IV/V/VI)

INTERMEDIATE

1.5 CE hrs

CE: CPA/BBS/BRN/
POST



INNOVATIONS IN ANGER MANAGEMENT TREATMENT

Robert Landry, PhD

Many clinicians have experienced frustration attempting to teach the principles of cognitive behavioral therapy to concrete patients in a forensic setting. The take away from many Anger Management groups is disappointing. When asking a graduate of an Anger Management group what he learned, the most common answer is a variation on, "I learned to count to 10 and walk away." There is a need for an anger treatment model specifically tailored for inmates that addresses their day to day situations and provides them with a deeper understanding of their emotional processes and the choices that could lead to a more fulfilling life. This presentation will describe a third wave, mindfulness based approach developed at Mule Creek State Prison. The 2x2 Anger Response Model maps out the split second cognitive-emotional processes that happens when an individual experiences anger.

(Cypress)

INTERMEDIATE

1.5 CE hrs

CE: CPA/BBS/BRN/
POST



WORDS TO DEEDS

SERVING THOSE WHO SERVE: CHALLENGES AND OPPORTUNITIES FOR SUPPORTING BEHAVIORAL WELLNESS FOR FIRST RESPONDERS, CUSTODY AND LAW ENFORCEMENT OFFICIALS

Primary Speakers/Moderators:

Joyce Dudley, JD, District Attorney, Santa Barbara County; Chair, Commission on Peace Officer Standards & Training Board

Bill Brown, MPA, Sheriff, Santa Barbara County; Commissioner, Mental Health Services Oversight & Accountability Commission; Past-President, California State Sheriffs Association

Panelists:

Katherine Minnich, Deputy Director, Human Resources, California Department of Corrections & Rehabilitation

Dean Borders, Warden, California Institution for Men, California Department of Corrections

Nick Turkovich, Peer Director & Satellite Director, First Responder Support Network

Patrick Clouse, Investigator- Santa Barbara County District Attorney's Office

Matt Garcia, MPA, Officer, Sacramento Police Department; Commissioner, Council on Criminal Justice & Behavioral Health

A panel of expert leaders who represent first responders, corrections, custody, other law enforcement officials, as well as a premier treatment program, will discuss current challenges faced in these professions, as well as initiatives being undertaken by their agencies for increased safety, behavioral health and resiliency, and reducing stigma around requests for help.

10:30—10:45 am

COFFEE BREAK

10:45 am—12:15 pm

BREAKOUT PRESENTATION 2

(Windjammer)

INTERMEDIATE

1.5 CE hrs

CE: CPA/BBS/BRN/
POST



REASONS INMATES ATTEMPT SUICIDE OR DIE BY SUICIDE: IMPLICATIONS FOR ASSESSMENT, TREATMENT, AND INSTITUTIONAL PREVENTION PROGRAMS

Robert Horon, PhD

This presentation will discuss unique contextual motivators for self-injurious behavior, suicide attempts, and deaths by suicide in incarcerated populations. Specific interview strategies designed to assess correctional motivators for self-harm will be presented. The presenter will explain the implications of presented information to institutional suicide prevention practices, as measured by statements of direct applications made in small and large group settings. This presentation will incorporate a clinical interview demonstration and attendees will discuss implications of the material presented for either clinical practice or institutional suicide prevention practices.

(Regency I/II/III)

INTRODUCTORY

1.5 CE hrs

CE: CPA/BBS/BRN/
MCLE/POST



INCORPORATING RESTORATIVE JUSTICE INTO MENTAL HEALTH COURT AND DIVERSION PROGRAMS

Kristi Abbott, LCSW, MSW

Christopher Bulkeley, JD

Restorative Justice has seen worldwide growth since the 1990s and is currently being used in criminal cases, prisons, and schools. Restorative Justice is an alternative theory of justice that emphasizes repairing the harm caused by criminal behavior, compared to traditional theories of justice which emphasize retribution. It requires offenders to take accountability for their actions and the harm they have caused. This presentation will be an overview of the Restorative Justice process. Potential barriers of implementing Restorative Justice with the Seriously Mentally Ill (SMI) target population will be examined. The presenters will discuss how they have incorporated Restorative Justice into Yolo County's Mental Health Court (MHC) and Proposition 47-funded Steps to Success Mental Health Diversion program, and how these differ from more traditional Restorative Justice programs.

(Spyglass)

INTERMEDIATE

1.5 CE hrs

CE: CPA/BBS/BRN/
POST



ASSESSING CHILD SEXUAL ABUSE ALLEGATIONS AND THE CHILD FORENSIC INTERVIEW

Susan Napolitano, PhD

Caroline Dower-Serrano, MA

Understanding the dynamics of Child Sexual Abuse (CSA) informs both the investigation and adjudication of abuse allegations. This presentation will delve into the reasons child victims provide delayed and often unconvincing disclosures of CSA as well as the reason evidence related to abuse claims is best gathered using a formal Child Forensic Interview (CFI) technique. Presenters will review victim/perpetrator sexual abuse dynamics and explain why it is often easier for victims to endure sexual abuse rather than face the family disruption, disbelief, blame, shame and fear that often follows a disclosure. Sexual abusers position themselves in families, schools, sports teams, churches and other environments to locate potential victims. Because most sexual abusers "groom" their victims and their environment, the stage is set for victim access and compliance while at the same time dissuading victim disclosure. Child Sexual Abuse Accommodation Syndrome (CSAAS), described by Roland Summit in the 1980's, is a theory originally designed to teach treating professionals the reasons children are so reluctant to disclose abuse. Expert testimony related to CSAAS is often offered in court to address juror misconceptions about a victim or to rebut an attack on a victim's credibility. Presenters will explore how CSAAS is used and misused in the courts and research, and case examples related to true and false claims of abuse will be analyzed.

Although theories of CSA may be useful in the investigation and adjudication of a child sex abuse case, evidence of a crime is undoubtedly more persuasive and harder to obtain. A properly conducted Child Forensic Interview (CFI) is designed to uncover and memorialize valuable information used to investigate and adjudicate sex crimes. Information related to specific offense details, the relationship with the accused, grooming techniques and physical evidence can be unearthed during the CFI and pursued by investigators. Trier's of fact can later examine how the child was questioned and what they said early in the disclosure process. A forensic interview of a child is a developmentally sensitive and legally sound method of gathering factual information regarding allegations of abuse, and is conducted by a competently trained, neutral professional who uses research and practice-informed techniques as part of a larger investigative process. The forensic interview is one component of a comprehensive child abuse investigation; which includes but is not limited to, the following disciplines: law enforcement, Child Protective Services, prosecutors, victim advocates and medical and mental health practitioners. Because use of a structured interview model is now a professional standard, the presenters will review the strengths and limitations of various CFI models as well as how such interviews inform the legal system, treating professionals and those who conduct risk assessments of sex offenders. Presenters will also examine the cultural context of allegations and how a child's developmental stage, memory and language capacity, and the impact of trauma influence disclosure and interview techniques.

(Big Sur)

INTERMEDIATE

1.5 CE hrs

CE: CPA/BBS/BRN/
MCLE/POST



SEX OFFENDERS AND THE LAW: PERILOUS PREDICTIONS OF PARAPHILIACS

Charles Scott, MD

This presentation provides an overview and development of laws related to sex offenders. The presenter will review key terms, epidemiology, emerging issues in child pornography possession, implications of indeterminate vs. determinate sentencing, U.S. Supreme Court cases addressing involuntary commitment of sex offenders, mandatory community notification and registration laws, practical issues in the assessment of sex offenders, biological treatments of sex offenders, and risk factors related to reoffending.

(Regency IV/V/VI)

INTERMEDIATE

1.5 CE hrs

CE: CPA/BBS/BRN/
POST



THEORY AND PRACTICE TO ADDRESS AND REDUCE HOPELESSNESS, SUICIDALITY, TRAUMA, AND VIOLENCE

Lorie Hill, PhD

This presentation will include concepts and specific approaches, based on theory, to address and reduce the incidence of hopelessness, suicidal ideation and behavior, trauma, and violence. The work of Bessel Van Der Kolk, MD, emotional literacy theory implementation, attachment, developmental, cognitive, trauma reduction including EMDR will all be included. This presentation will give examples of work within a cultural and systemic framework. The presenters will illustrate methods for engaging the strength of incarcerated people to reduce their hopelessness which often originates in trauma and can underlie suicidal and violent ideation, impulses and behavior. Specific examples to illustrate the concepts and underlying theory will be included. Issues of complex trauma will be addressed within a context of strength based work that can enhance resilience.

(Cypress)

INTERMEDIATE

1.5 CE hrs

CE: CPA/BBS/BRN/
POST



WORDS TO DEEDS TRACK

CALL TO ACTION: NEXT STEPS TOWARD PROMOTING AND ACHIEVING BEHAVIORAL WELLNESS FOR FIRST RESPONDERS, CUSTODY AND LAW ENFORCEMENT OFFICIALS

Primary Speakers/Moderators:

Joyce Dudley, JD, District Attorney, Santa Barbara County; Chair, Commission on Peace Officer Standards & Training Board

Bill Brown, MPA, Sheriff, Santa Barbara County; Commissioner, Mental Health Services Oversight & Accountability Commission; Past-President, California State Sheriffs Association

Building on the Behavioral Wellness discussion from the prior Words to Deeds Track Session 1, speakers will enhance the conversation surrounding current challenges faced by first responders, corrections, custody and, other law enforcement officials, as well as initiatives currently underway for improved safety, behavioral health and resiliency, and reducing stigma around requests for help. The Call to Action will elicit proposed solutions to challenges articulated during this session, including possible policy and regulatory support and changes. Attendees should come prepared for interactive discussion, and personal experience or recommendations are encouraged.

12:15—1:15 pm

(Regency Main)

LUNCHEON

1:15—2:45 pm

BREAKOUT PRESENTATION 3

(Big Sur)

INTRODUCTORY

1.5 CE hrs

CE: CPA/BBS/BRN/
MCLE/POST



MALINGERING: UTILITY AND MEASUREMENT

Bethany Walters, PhD

Dana Dalgleish, PhD

This workshop will focus on malingering: what it is, why it occurs, and how it is identified. Malingering of cognitive, psychological, and medical symptoms will be discussed as they relate to clinical evaluation and assessment measures, including specific instruments, such as the SIRS, and within embedded measures, such as the MMPI-II. An overview of documentation of malingering and related behaviors, e.g., impression management will be provided. The session will conclude with a discussion regarding the ethical and legal issues associated with malingering.

(Regency IV/V/VI)

INTERMEDIATE

1.5 CE hrs

CE: CPA/BBS/BRN/
MCLE/POST



COMPETENCE TO STAND TRIAL ASSESSMENT: SQUARING THE PRACTICES WITH CASE LAW

John Philipsborn, JD

Competence to stand trial is the legal condition most evaluated pursuant to court orders in pending criminal cases. California evaluators use various approaches to their evaluations, but often do so without reference to, or in some instances knowledge of, the court rulings that explain the constitutionally based contours of competence to stand trial, or of the professional standards and literature that makes reference to those contours. A number of institutions and jurisdictions in California have set forth assessment protocols, and guidelines that do not take into account the standards and approaches rooted in controlling case law. This presentation, by a lawyer who has qualified in courts as an expert on the assessment of competence to stand trial, will review the roots of the requirement of competence to stand trial, including the many United States Supreme Court decisions that frame the legal condition at issue, as well as the current standards of practice that apply in both Federal and State courts.

(Regency I/II/III)

INTERMEDIATE

1.5 CE hrs

CE: CPA/BBS/BRN/
POST



THE SPRAWL OF CHILDHOOD ADVERSITY INTO ADULT MENTAL HEALTH, ADDICTION, AND CRIMINALITY: UNDERSTANDING AND INTERVENTIONS

Melissa Piasecki, MD

Our understanding of the long-ranging impact of childhood adversity is rapidly growing. Since the landmark study by Anda and Felitti published in 1998, medical and mental health professionals and researchers have explored the deep roots of developmental adversity. Other landmark research has identified childhood trauma's effects on the brain at a cellular level. The research has been fruitful. We now have a better understanding of how early adversity impacts the development of brain's stress mechanisms and how this impact translates into lifelong health behaviors and addictions.

This presentation will summarize the neurobiological underpinnings of adversity and the rich research that traces the effects of adversity into adulthood, with special emphasis on addictions and adult criminality. This presentation will also review published interventions related to adversity and trauma. These interventions include variations on journaling, skills-building, resilience and problem solving.

(Spyglass)

ADVANCED

1.5 CE hrs

CE: CPA/BBS/BRN/
POST



PAROLE SUITABILITY AND RISK ASSESSMENT OF LONG-TERM INCARCERATED SEX OFFENDERS – PART 1

James Rokop, PhD
Charles Flinton, PhD

The assessment of aging, long-term incarcerated sexual offenders in the prison system is extremely complex for both evaluators and the Board of Parole Hearing Commissioners who are tasked with determining parole suitability, often in cases where an inmate has committed severe sex crimes many years or decades prior to their assessment and first parole hearing.

The two main pathways to sexual offending are the antisocial and sexual deviance pathway, both of which are impacted by the aging process. Sexual deviancy in the form of paraphilic disorders are often considered chronic enduring conditions that develop in adolescence. However, evidence of such disorders in the prison environment is often sparse. Lack of opportunity, lack of victim presence, and lack of antisocial drive are some reasons why assessment of these disorders and risk for re-offending is extremely difficult. Likewise, antisocial behavior that drives sexual offending behavior, with or without evidence of sexual deviance, can be extremely difficult to assess, absent obvious continuation of relevant antisocial behavior through prison infractions. This presentation will discuss these assessment barriers, offer some practical guidelines for gauging risk that could be beneficial to both treatment providers, forensic evaluators, and parole hearing evaluators and commissioners.

This presentation will also cover in-prison and post-prison treatment considerations and help to narrow down the types of questions and issues most relevant for evaluators and commissioners to consider in these complex cases.

(Windjammer)

ADVANCED

1.5 CE hrs

CE: CPA/BBS/BRN/
POST



IMPLEMENTATION OF EVIDENCE-BASED PRACTICES: A NETWORKING OPPORTUNITY

Tom Granucci, LCSW
Will Cash

This workshop is designed to be highly interactive and to provide attendees with networking opportunities. Within the workshop, attendees will choose their small groups based on their desire to network with colleagues who are geographically local, or to expand connections across California. The workshop will assume knowledge of the Risk-Need-Responsivity (RNR) model and will introduce concepts from implementation science to assist attendees to practically integrate the RNR model into their day-to-day mental health practice. Small group discussions will give participants time to interact around implementation science ideas and organizational level change issues including implementation stages and drivers. Case examples will be used to demonstrate how RNR can be applied at the clinical level.

(Cypress)

INTERMEDIATE

1.5 CE hrs

CE: CPA/BBS/BRN



WORDS TO DEEDS TRACK

HOT TOPICS POLICY DISCUSSION ADDRESSING THE UNSERVED & UNDERSERVED: BUILDING CAPACITY FOR EARLY INTERVENTION WHILE SERVING EXISTING NEEDS

Moderator: Honorable Stephen V. Manley, JD, Superior Court Judge, Santa Clara County; Commissioner, Council on Criminal Justice & Behavioral Health

Speakers:

Brenda Grealish, Acting Deputy Director, Mental Health & Substance Use Disorder Services
Christina Edens, Deputy Director, Forensic Services Division, California Department of State Hospitals
Helene Zentner, Field Director, California Board of State & Community Corrections
Sharmil Shah, PsyD, Chief of Program Operations, Mental Health Services Oversight & Accountability Commission
Lahela Mattox, MA, Local Government Liaison/Acting Grant Manager, Homeless Coordinating and Financing Council

California state experts will present the newest current policies and funding opportunities available. Subject areas will include: Prevention and early psychosis identification and treatment; Pre-trial diversion addressing the Incompetent to Stand Trial [IST] population; Grants administered by the Board of State and Community Corrections; Resources to address homelessness; and Mental Health Services and Oversight and Accountability Commission programs. Experts from state departments will include: Department of Health Care Services; Department of State Hospitals; Board of State and Community Corrections; and Mental Health Services and Oversight and Accountability Commission. Attendees will have the opportunity to ask detailed questions to expert leaders about access to available funding.

2:45—3:00 pm

BREAK

3:00 —4:30 pm

BREAKOUT PRESENTATION 4

(Regency IV/V/VI)

INTERMEDIATE

1.5 CE hrs

CE: CPA/BBS/BRN/
POST



FORENSIC ISSUES IN COMMUNITY PSYCHIATRY

Chad Koyanagi, MD

A career in community psychiatry is not typically thought of as one heavily inundated with forensic psychiatric issues. Given the enormity of homelessness amongst the severely mentally ill in Hawaii, as well as treatment access issues, it is becoming more the norm that a community psychiatrist has to have a skillset in dealing with forensic psychiatric issues. In the outpatient setting these include: familiarity in the Assisted Community Treatment law, assessing for competency and helping clients obtain legal guardianship, interfacing with agencies like Adult Protective Services, advocating for homeless patients in acute care hospitals when such hospitals try to justify discharging very sick patients by peculiar interpretations of decisional capacity, and understanding legal encumbrances such as probation, parole, and mental health court. In addition, service programs helping the homeless in Hawaii increasingly involve legal issues: law enforcement assisted diversion, police Crisis Intervention teams, and oral ex-parte's. Working in a community setting like a community hospital, one needs familiarity with civil commitment, Orders to Treat, Conditional Release, and legal guardians. Finally, we examine the complicated process of treating some of the most severely ill, chronically homeless individuals, which involved guardianship, civil commitment, police assistance, and use of long-acting injectable antipsychotic medications.

(Regency I/II/III)

INTERMEDIATE

1.5 CE hrs

CE: CPA/BBS/BRN/
MCLE/POST



MENTAL HEALTH DIVERSION—A CALL TO ACTION

Laura Arnold, JD
Erin Ferma, PhD
Honorable Stephen Manley
Lieutenant David Petrocelli

For decades, California has struggled to manage the ever-growing population of individuals with severe mental illness, many of whom, for various reasons, appear to be stuck in a revolving-door criminal justice system. Warehousing of these men and women in jails, state hospitals, and prisons has proven to be prohibitively expensive and unproductive in terms of reducing recidivism and protecting the public. State sponsored incentives for local governments to create infrastructures for community-based treatment of the mentally ill have had limited success. What is needed is a driving force, a game-changer, and it is here, in the form of mental health diversion of criminal defendants. But the work has only just begun. A panel of experienced criminal justice practitioners will explain the new law, describe the role of forensic and clinical mental health professionals in this brave new world, and address some of the challenges faced and solutions being contemplated statewide in implementing a system of community-based, public-safety-oriented, long-term care for California's mentally ill population.

(Big Sur)

INTERMEDIATE

1.5 CE hrs

CE: CPA/BBS/BRN/
POST



JUVENILES WHO SEXUALLY OFFEND: CHARACTERISTICS, ASSESSMENT, AND TREATMENT

Norbert Ralph, PhD, MPH

The presentation will discuss the characteristics, assessment, and treatment of juveniles who sexually offended. Delinquent and comorbid conditions of these youth and the epidemiology characteristics will be presented. The presenter will discuss psychiatric, general delinquency, and specialized sexual assessment measures, as well as treatment methods and outcomes for this group.

(Spyglass)

ADVANCED

1.5 CE hrs

CE: CPA/BBS/BRN/
POST



PAROLE SUITABILITY AND RISK ASSESSMENT OF LONG-TERM INCARCERATED SEX OFFENDERS – PART 2

James Rokop, PhD
Charles Flinton, PhD

The assessment of aging, long-term incarcerated sexual offenders in the prison system is extremely complex for both evaluators and the Board of Parole Hearing Commissioners who are tasked with determining parole suitability, often in cases where an inmate has committed severe sex crimes many years or decades prior to their assessment and first parole hearing.

The two main pathways to sexual offending are the antisocial and sexual deviance pathway, both of which are impacted by the aging process. Sexual deviancy in the form of paraphilic disorders are often considered chronic enduring conditions that develop in adolescence. However, evidence of such disorders in the prison environment is often sparse. Lack of opportunity, lack of victim presence, and lack of antisocial drive are some reasons why assessment of these disorders and risk for re-offending is extremely difficult. Likewise, antisocial behavior that drives sexual offending behavior, with or without evidence of sexual deviance, can be extremely difficult to assess, absent obvious continuation of relevant antisocial behavior through prison infractions. This presentation will discuss these assessment barriers, offer some practical guidelines for gauging risk that could be beneficial to both treatment providers, forensic evaluators, and parole hearing evaluators and commissioners.

This presentation will also cover in-prison and post-prison treatment considerations and help to narrow down the types of questions and issues most relevant for evaluators and commissioners to consider in these complex cases.

(Windjammer)

INTERMEDIATE

1.5 CE hrs

CE: CPA/BBS/BRN/
MCLE/POST



SOCIAL JUSTICE AND HISTORICAL REPAIR: RACE, ETHNICITY, AND CULTURE IN FORENSIC MENTAL HEALTH SERVICES AND SYSTEMS

Matthew Mock, PhD

Race, culture, ethnicity and social diversity are inextricable aspects of our work in mental health. Forensic psychologists and mental health staff should consider these factors as well as the dynamics of power differentials in assessment, diagnoses, performing evaluations, treatment and dispositioning, forming effective working relationships, and short and long term outcomes. Professional organizations such as the American Psychological Association (APA), American Counseling Association (ACA) and National Association of Social Workers (NASW) have longstanding policies and guidelines for including race and cultural diversity in theory, research and practice. System inequities have been acknowledged. Services at all levels such as those in forensic mental health continue to strive for cultural humility, cultural competency and responsiveness with a vision for optimal mental health practices. This workshop will acknowledge such commitments as well as dynamically present future challenges with research, policy, practice as well as system recommendations.

The presenter will share in-depth knowledge and experiences in the context of transforming mental health care in California. There will be a presentation of some of the most up-to-date systems transformations from the State of California in the USA context given the mandates of the Mental Health Services Act to transform the public mental health system with taxpayer support. The presenter will also facilitate dynamic learning through didactic presentation, and videotaped narratives of forensic mental health clients addressing service disparities relevant to forensic situations in order to move towards improved mental health outcomes. Participants will be facilitated in sharing some of their own experiences in continuing to make their forensic practices relevant to current times and challenges. This session will particularly benefit forensic psychologists, consumers, mental health, and legal professionals who have a practice with an eye on future, cutting-edge work to make a difference with improved and more socially just outcomes in increasingly racially, ethnically and culturally diverse communities in forensic settings.

(Cypress)

INTERMEDIATE

1.5 CE hrs

CE: CPA/BBS/BRN/
MCLE



WORDS TO DEEDS TRACK

PERSPECTIVES FROM PROFESSIONAL EXPERTS: MEETING THE CHALLENGE OF JAIL DIVERSION FOR THE UNSERVED AND UNDERSERVED

Moderator:

Brenda Grealish, Acting Deputy Director, Mental Health & Substance Use Disorder Services

Speakers:

Honorable James Bianco, JD, Superior Court Judge, Los Angeles County Superior Court Mental Health Court

Geoff Twitchell, PhD, Director of Treatment & Clinical Services, San Diego County Probation Department

Kathleen Lacey, LCSW, MSW, Program Director, UCSF/Citywide Case Management – San Francisco

Toni Tullys, MPA, Director, Behavioral Health Services, County of Santa Clara Health System

Forensic experts will present collaborative best practices regarding the latest jail diversion programs addressing the unserved and underserved from their individual professional perspectives. Professional expertise will be shared by leaders in the judicial, probation, social work/case management, and behavioral health fields. Attendees are encouraged to ask questions to improve their own professional effectiveness.

4:45 pm

(Regency I/II/III/Main)

FMHAC BUSINESS MEETING

FMHAC members and non-members are welcome. However, only current dues-paying members can vote.

BOARD ELECTIONS:

- President
- Vice President
- Treasurer

RAFFLE

FRIDAY, MARCH 15

9:00 am—12:15 pm

(Regency I/II/III/Main)

3.0 CE hrs

CE: CPA/BBS/BRN,
MCLE /POST

MENTAL CONSEQUENCES OF WRONGFUL CONVICTION

Kelley Fleming, JD

Darwin Crabtree, NCIP Exoneree

Gloria Killian, Exoneree

What are the leading causes of wrongful convictions and what are the mental health implications for those wrongfully incarcerated? Northern California Innocence Project (NCIP) will answer these questions and more in a moderated panel discussion. The presenters include an NCIP Staff Attorney who will discuss causes of wrongful conviction, along with two Exonerees who will discuss their particular cases and the psychological implications of wrongful incarceration. The panel is moderated by NCIP's External Relations Director.

10:30—10:45 am

BREAK

**ROOM CHECKOUT
AT THE HYATT IS
12:00 NOON**



WORDS TO DEEDS

CHANGING THE PARADIGM FOR CRIMINAL JUSTICE AND MENTAL HEALTH

A PROJECT OF THE FORENSIC MENTAL HEALTH ASSOCIATION OF CALIFORNIA

Since 2003, Words to Deeds has provided a unique forum that has evolved into a standard best practice for creating a true shift in the paradigm between criminal justice and mental health by fostering successful and ongoing collaboration among courts, criminal justice agencies, mental health professions, and governmental and non-governmental organizations.

Mission

The leaders in criminal justice and mental health participating in this effort strive to end the criminalization of individuals with mental illness by supporting proven strategies that promote early intervention, access to effective treatments, a planned reentry and the preservation of public safety.

Vision

A true shift in the paradigm between criminal justice and mental health will embody an effective jail diversion system that fosters a successful and ongoing exchange of information among courts, criminal justice agencies, mental health professions, government and non-government organizations, to achieve a substantial positive change in the way individuals with mental illness are treated within our communities.

THANKS TO OUR SUPPORTING PARTNERS OF WORDS TO DEEDS XIII!



LOS ANGELES COUNTY
DEPARTMENT OF
MENTAL HEALTH
hope. recovery. wellbeing.



California
Health Care
Foundation



THANKS TO OUR SPONSORS OF THE WORDS TO DEEDS TRACK 2019!



CONTINUING EDUCATION

Find your license type below and follow the instructions to receive CE credit. It is recommended that you use the Sign In/Out form provided in your conference packet to ensure FMHAC has a record of your session attendance.

Don't forget to be signed in and out of your sessions. Please don't ask FMHAC to sign for a session outside the meeting rooms, after a class has started, or before a class has ended. We can't put our CE providership in jeopardy!

CE - CPA/BBS/BRN - All Workshops Approved

CPA OPD (Psychologists) - Provider #FOR005

BBS (MFT, LCSW) - The Board of Behavioral Sciences accepts CEs approved by the CPA.

BRN (RN, NP, LVN, Psych Tech) - Provider #CEP 5965

Utilize the Sign In/Out form to record attendance. One form is provided to each attendee. Make sure to obtain FMHAC initials at each workshop you attend and ensure a member of the FMHAC Board signs the form at the end of the conference. Maintain the yellow copy.

Fill out the Evaluation Survey to receive credit. The Evaluation is electronic and will be emailed to you on the final day of the conference.

All sessions approved for CE certification.

CE Statement: FMHAC is approved by the California Psychological Association to provide continuing professional education for psychologists. FMHAC maintains responsibility for this program and its content.

MCLE - See Courses Marked MCLE

CA State Bar Provider #15388

Fill out the Evaluation Survey to receive credit. The Evaluation is electronic and will be emailed to you on the final day of the conference.

It is recommended that you utilize the Sign In/Out form provided in your conference packet: One form is provided to each attendee. Obtain FMHAC initials at each workshop you attend, have FMHAC sign the form at the end of the conference and maintain the yellow copy.

Selected Sessions:

- SUBSTANCE USE AND OFFENDERS: FROM HIGH TO HOMICIDAL
- ASSESSMENT OF DANGEROUSNESS FOR MDOs: A STRUCTURED APPROACH
- SEXUAL COERCION: FROM PERSUASION TO SADISM
- TRANSFER EVALUATIONS: ASSESSING REHABILITATIVE POTENTIAL WITHIN THE JUVENILE JUSTICE SYSTEM
- INCORPORATING RESTORATIVE JUSTICE INTO MENTAL HEALTH COURT AND DIVERSION PROGRAMS
- SEX OFFENDERS AND THE LAW: PERILOUS PREDICTIONS OF PARAPHILIACS
- MALINGERING: UTILITY AND MEASUREMENT
- COMPETENCE TO STAND TRIAL ASSESSMENT: SQUARING THE PRACTICES WITH CASE LAW
- MENTAL HEALTH DIVERSION—A CALL TO ACTION
- SOCIAL JUSTICE AND HISTORICAL REPAIR: RACE, ETHNICITY, AND CULTURE IN FORENSIC MENTAL HEALTH SERVICES AND SYSTEMS
- PERSPECTIVES FROM PROFESSIONAL EXPERTS: MEETING THE CHALLENGE OF JAIL DIVERSION FOR THE UNSERVED AND UNDERSERVED

This activity has been planned and implemented in accordance with the Essential Areas and policies of the Institute for Medical Quality/California Medical Association (IMQ/CMA) through the joint sponsorship of SCVMC and FMHAC. The SCVMC is accredited by the Institute for Medical Quality/California Medical Association (IMQ/CMA) to provide continuing medical education for physicians. The SCVMC designates this Live Activity for a maximum of 14.5 AMA PRA Category 1 Credit(s)™. Physicians should claim only the credit commensurate with the extent of their participation in the activity. This credit may also be applied to the CMA Certification in Continuing Medical Education. Conflict of Interest Statement: Presenters for CME courses were screened for conflicts of interest and any conflicts were resolved by review of CME activity content, e.g. slides, by the Conference Planning Committee CME Chair, who has no conflict of interest.

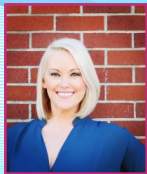
POST

Most sessions approved for POST certification. POST certification # 2540-28003-18002.

STC - Special Certification

The FMHAC Conference does not qualify for the Pre-Certification of STCs. However, you may still be able to receive STCs if you apply for Special Certification through your STC training manager/coordinator.

SPEAKER BIOS



Kristi Abbott, LCSW, MSW — Kristi Abbott is the Clinical Supervisor of Yolo County's Forensic Mental Health team. She provides clinical support and program supervision of the agency's Mental Health Court, Addiction Intervention Court, and the Incompetent to Stand Trial (IST) misdemeanor program. In this role, she also collaborates with the Public Guardian and County Counsel regarding LPS and Murphy Conservatorships. Prior to her current

position, Kristi worked for Contra Costa County's Forensic Mental Health Department and helped launch their Mental Health Evaluation Team (MHET). She also served as the clinician on Contra Costa County SWAT's Crisis Negotiation Team (CNT). Kristi helped design and facilitate the Crisis Intervention Team (CIT) training to all 23 law enforcement agencies in the County. Kristi also served as a board member for the County's MHSA Consolidated Planning and Advisory Board (CPAW). Kristi graduated from University of California, Davis in 2004 with a Bachelor of Arts Degree in Psychology and received her Master of Social Work from San Diego State University in 2009.



Laura Arnold, JD — Hailing from Cleveland, Ohio, Laura has made Southern California her home since 1995. She is currently the lead attorney for the Writs & Appeals Unit for the Riverside County Public Defender, after a twenty-year career with the San Diego County Public Defender's Office. Laura presents regularly on issues of substantive criminal law and procedure for the California Public Defender's Association and for local bar

associations, and over the past two years has expanded her speaking responsibilities outside of California, presenting on the use of evidence-based practices in negotiating just outcomes for clients accused of sexual and violent crimes and discussing strategies for trying and winning (or at least hanging) serious sex crimes cases. Last year, Laura presented for FMHAC on the subject of Juvenile Transfer ("Fitness") hearings. Laura sits on the Board of the California Public Defender's Association and chairs the Mental Health Civil Commitment Committee and the Juvenile Defense Committee. Since 2016, she has served the California Judicial Council as an appointee to the Council's Criminal Law and Appellate Law Advisory Committees.



Honorable James Bianco, JD — Judge James Bianco is a Los Angeles Superior Court Judge who has been assigned to the Mental Health Courthouse since 2013, where he hears cases involving criminal competency conservatorships, LPS hospital hearings, involuntary medication petitions, and mentally disordered offenders. He was the Mental Health Courthouse Site Judge, supervising operations of four mental health courtrooms,

from 2013-2018, and has been a judicial officer since 2005. He is currently the Chair of the Mental Health Committee of the California Judges Association, and has been a member of Los Angeles County District Attorney Jackie Lacey's Mental Health Advisory Board since 2014, where he has served as the Chair of the Community Based Restoration Working Group since 2015. Judge Bianco is also a member of the Judicial Council of California's Collaborative Justice Courts Advisory Committee, where he serves as the Vice Chair of the Mental Health Subcommittee. Judge Bianco is a member of the California Supreme Court Advisory Committee on the Code of Judicial Ethics, and frequently serves as ethics faculty for other judges.



Dean Borders — Dean Borders has been the Warden or acting Warden at the California Institution for Men (CIM) since December 2015. During his career, which began in 1989, he has worked at several institutions throughout the state and has worked with both male and female offenders. Mr. Borders has held several titles which include Correctional Officer, Sergeant, Lieutenant, Captain and Associate Warden. Prior to assuming his current position,

he served as the Chief Deputy Warden at the California Institution for Women (CIW).



Christopher Bulkeley — Christopher Bukeley has been a member of the Yolo County District Attorney's Office since graduating from McGeorge School of Law in 1992. During the more than two decades since joining that office, he has held a wide variety of assignments. He has successfully prosecuted cases resulting in convictions for murder, child molestation, arson, and numerous other felony charges. As the original member of the Mental Health

Court team, he assisted in the design of the program and has been the District Attorney representative on the team since the program's inception. In 2013, he coordinated the establishment of the innovative Yolo County Neighborhood Court which is the first adult restorative justice program using the facilitated conference model in the State of California. This model has been adopted by other offices to such as the Los Angeles City Attorney's Office. In 2015, he spearheaded a new initiative creating a Homeless Diversion Program that uses restorative justice to resolve criminal cases involving homeless offenders, emphasizing non-punitive services focused case resolutions. The Homeless Diversion Program is a collaboration between the District Attorney and Health and Human Services Agency due to the high level of mental health and substance abuse in the homeless offender population.



Susan Burton — Drawing on her personal experiences, she founded A New Way of Life Re-Entry Project (ANWOL) in Los Angeles in 1998, dedicating her life to helping others break the cycle of incarceration. ANWOL provides resources such as housing, case management, employment, legal services, leadership development and community organizing on behalf of, and with, people who struggle to rebuild their lives after incarceration. Susan is

widely recognized as a leader in the national criminal justice reform movement. Released in 2017, her memoir, *Becoming Ms. Burton*, received a 2018 NAACP Image Award for Outstanding Literary Work in the category of Biography/Autobiography. *Becoming Ms. Burton* is also the recipient of the inaugural Goddard Riverside Stephan Russo Book Prize for Social Justice. Susan is leading an initiative to develop a replication model to assist other communities with providing culturally authentic re-entry supports to assist individuals with histories of incarceration and/or convictions.



Will Cash — Will Cash is principal consultant for Kmodity Corp, a corrections management consulting firm that provides implementation support, training and technical assistance from pretrial to parole to federal, state and local agencies working with justice-involved individuals. Prior to founding Kmodity Corp, He served as an Implementation Specialist with the Colorado Department of Public Safety's Division of Criminal Justice and

previously worked with the City and County of Denver's Crime Prevention and Control Commission (CPCC) to implement an evidence-based reentry model that helps individuals successfully transition back into the community after their release from jail. He is a seasoned public speaker and trainer and has extensive experience assisting criminal justice administrators, practitioners, and service providers with implementing evidence-based practices that enhance program outcomes and services to justice-involved populations. Will is a certified facilitator trainer for the National Institute of Corrections Thinking for a Change Program, a member of the Denver CPCC's Racial, Ethnic and Gender Disparity Committee and an advisory board member on the Alabama Prison Arts & Education Project.



Patrick Clouse — Patrick Clouse is Senior Psychologist Supervisor for the California Department of State Hospitals. He was the Clinical Psychologist for the California Department of Corrections and Rehabilitation from 2006-2009. He sits on the Board and is the Disaster Mental Health Co-Lead for the American Red Cross, Pacific Coast Chapter. Patrick is also the Organizational Consultant and Trainer for Amgen, Inc. He is the

developer of Employee Training Program Manuals: *Crisis Intervention and Response*, *Crisis Case Response*, *Coordinated Operations for Performance in Emergency*, *Casualty Collection Support and Emergency Work Performance*. He is principal owner of a consulting firm, Trauma Intervention Specialists.



Darwin Crabtree, — Darwin Crabtree served over nine years in prison and remained a lifetime sex offender registrant until January 17, 2018 when his child molestation charges were dismissed and his conviction vacated. The District Attorney issued a public apology to Crabtree for his office's role in his conviction.



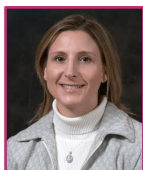
Trayci Dahl, PhD, ABPP, CTM — Trayci Dahl is a consulting psychologist for the California Department of State Hospitals, MDO commitment program. Dahl earned her Ph.D. in Clinical Psychology from the University of Michigan and completed her doctoral training as an intern at Patton State Hospital in 2003-2004. She is a Diplomate in Forensic Psychology and a Fellow of the American Academy of Forensic Psychology. She is licensed in California and Oregon. Her focus has been on risk assessment of adult violent offenders, with a primary interest in filicide and other individuals facing capital charges.



Dana Dalglish, PhD — Dana Dalglish is a forensic psychologist in private practice in Scottsdale, Arizona. In her current practice, she provides a variety of forensic assessments, including competency to stand trial, competency to get divorced, family court evaluations and psychological evaluations for the Department of Child Safety. Dana obtained her Ph.D. in Clinical Forensic Psychology from Alliant International University in 2017 and has experience working in various forensic settings, including psychiatric hospitals, jails, and juvenile detention centers. In addition to her current practice, her experience includes pretrial evaluations, sentencing evaluations, neuropsychological evaluations, violence and sexual risk assessment, bariatric evaluations, and learning disorder evaluations.



Melinda DiCiro, PsyD — Melinda DiCiro, is the Chief Psychologist for MDO Civil Commitment in the Forensic Services Division of the Department of State Hospitals. She was formerly the Clinical Director of Inpatient Treatment and Crisis Triage at California State Prison Sacramento.



Deirdre D'Orazio, PhD — Deirdre D'Orazio serves as a consultant to the CA Department of State Hospitals, where she has worked in various capacities for more than fifteen years including as staff psychologist, senior supervising psychologist, SVP forensic evaluator, and Director of Evaluation and Development Services, overseeing the treatment and forensic evaluation programs for the Sexually Violent Predator program at Coalinga State Hospital. In her current position she serves as liaison to the SVP Conditional Release program, consultant on sexual offender risk assessment and treatment planning, and designee to the CA Sex Offender Management Board (CASOMB). In her private practice, Deirdre provides clinical services, expert forensic services, training, outcome evaluation, and program development. She serves on the leadership boards for the Association for the Treatment of Sexual Abusers, the Sexual Offender Civil Commitment Network, CASOMB, and is a past board member of the California Coalition On Sexual Offending (CCOSO). Deirdre has conducted more than 700 sexual offender evaluations, has provided expert witness testimony on 67 occasions, and has treated approximately 400 sexual offense perpetrators and victims. She holds psychologist licenses in California, Minnesota, and North Dakota and is a certified trainer for the Static99R, the Structured Risk Assessment Forensic Version, and the Stable and Acute 2007.



Caroline Dower-Serrano, MA — Caroline Dower-Serrano is a Child Forensic Interviewer with the Family Healing Center in Fresno, Ca. She has specialized in forensic interviewing for over 10 years, interviewing thousands of children during that time. She has conducted interviews for sexual assault, physical child abuse, child endangerment, child abduction, human trafficking, domestic violence and homicide allegations. She has coordinated and trained a multidisciplinary team including law enforcement, social services, prosecutors, advocacy, and mental health in Fresno County.

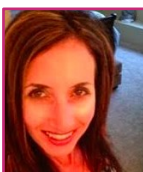
Caroline was trained by California Child Abuse Training and Technical Assistance Center (CATTa) in Child Forensic Interview Training in 2008, and was trained by National Child Advocacy Center (NCAC) in Advanced Forensic Interviewing Training in 2010. Caroline earned her MA in Marriage and Family Therapy from Fresno Pacific Biblical Seminary in 2018.



Joyce Dudley, JD — Joyce Dudley was elected District Attorney of Santa Barbara County in June 2010 and assumed office on June 22, 2010. Joyce is dedicated to fulfilling the primary function of the District Attorney's Office, which is to seek justice for all. In addition to working closely with all public safety agencies, District Attorney Dudley is committed to working with other public agencies and private community organizations countywide to improve and coordinate efforts to prevent crime. Joyce Dudley began her legal career in the Santa Barbara County District Attorney's Office in 1990. She has prosecuted well over one thousand cases including murder, arson, robbery, burglary, crimes involving sexual offenses, crimes against children and hate crimes. Involvement in community activities has been a priority for Joyce during her career as a prosecutor. She has received numerous awards honoring her outstanding performance and volunteer activities from law enforcement agencies as well as community organizations.



Christina Edens — Christina Edens was appointed as the Deputy Director of the Forensic Services Division at the California Department of State Hospitals earlier this year after serving as the Assistant Deputy Director since 2016. She began her state career with the former Department of Mental Health in 1998 working in a cooperative program that partnered with the Department of Rehabilitation to support the employment needs of individuals with serious mental illness. During her 20 years of service to the department, Ms. Edens has worked in multiple positions focused on the fiscal policy and program issues impacting the state hospital system. She has had the opportunity to lead some of the most significant efforts of the department including the continued expansion of the Jail-Based Competency Treatment Program for felony Incompetent to Stand Trial patients and the launch of the new DSH Diversion Funding Program for pre-trial felony mental health clients.



Erin Ferma, PhD — Erin Ferma is a clinical and forensic psychologist in San Diego, California. In her 12 years of practice, she has developed a specialty area in both trauma and sexual offending, and provides psychological evaluations to both attorneys and the courts throughout the State of California in an effort to answer psycho legal questions that frequently arise in criminal cases. Erin also provides trainings to various organizations on mental health related topics and has more recently become interested in utilizing her expertise via consultation as it pertains to public policy.



Kelley Fleming, JD — Kelley Fleming received her J.D. from Whittier Law School in 2007, after having been a teacher for several years. She was practicing in the field of special education prior to serving as Deputy Public Defender in Humboldt County. Ms. Fleming maintains a caseload focusing on claims of innocence involving DNA and other evidence.



Charles Flint, PhD — Charles Flint has been engaged in research, assessment, and treatment of child abuse since 1986. Since 1992, his work has focused on assessing and treating sexual offenders. His work includes consulting on the management of sexual offenders with various local and national organizations, including the Center on Sex Offender Management (CSOM), Generation 5, the National Organization of Women (NOW), and the California Sexual Offender Management Board (CASOMB). In 2004, he was appointed Co-Chair of the San Francisco Sex Offender Management Alliance (SFSOMA) by the San Francisco Mayor's Office. In 2006, Charles co-authored, "*Engaging Resistance*," a book that explores the manner in which sexual offenders resist change and how this resistance both mirrors and is facilitated by treatment providers, the criminal justice/child welfare systems, and society. In 2008, he founded the San Francisco Forensic Institute, a state-of-the-art forensic psychological assessment center.

In 2010, as chair of the Adult Standards Committee of the California Coalition on Sexual Offending, he was the primary author for the "Guidelines and Best Practices: Adult Male Sex Offender Treatment." Most recently, he co-founded the Blue Rock Institute, an organization aimed to prevent sexual abuse through early intervention and education. Charles is currently completing a manuscript on "The Institutionalization and Deinstitutionalization of Sexual Offenders: A management and treatment planning guide for sex offender community reintegration."



Matt Garcia, MPA — Matthew Garcia is a 23-year veteran of the Sacramento Police Department. During his career he has held a variety of assignments to include: Patrol, Problem Oriented Police Officer, Bike Officer, Background Investigator, Robbery/Gang Detective and Field Training Officer. He was recently awarded Field Training Officer of the Year for the Sacramento Police Department. Officer Matt is a 13 year Air Force Veteran and most recently served as an

Advanced Academy Instructor at the Security Forces Academy in San Antonio, Texas. He has a Bachelors Degree from California State University, Sacramento and Master's Degree in Public Administration from National University. Matt was appointed in 2016 to serve as a board member on the Council of Criminal Justice and Behavioral Health by Senate Rules Committee.



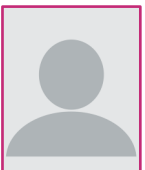
Tom Granucci, LCSW — Tom Granucci worked for 13 years in the mental health field before joining the U.S. Probation Office in 1999. His mental health career has included outpatient work with severely mentally ill adults, and adolescent sex offenders, residential treatment with adolescent offenders, and management of mental health and substance abuse care. As a U.S. Probation Officer/Mental Health Treatment Specialist, Tom managed a specialized caseload of mentally ill

offenders and sex offenders for 8+ years. As a Supervisory U.S. Probation Officer for 8 years, he led a team of six officers. In his current role, as the Central District of California's first EBP Coordinator, he is responsible for evidence-based practices implementation district-wide, which includes seven counties and 12 field offices. Tom was an original member of the California State University, Los Angeles Forensic Social Work Advisory Board and has been a part-time faculty member in the School of Social Work since 2003, teaching DSM with a forensic emphasis, recovery in mental health, and forensic social work. He also serves on the Board of Directors of the Forensic Mental Health Association of California as Director of Conference. He is an experienced public speaker and trainer.



Brenda Grealish — Brenda Grealish is currently the Acting Deputy Director for Mental Health and Substance Use Disorder Services. She was appointed Assistant Deputy Director for Mental Health and Substance Use Disorder Services within the California Department of Health Care Services (DHCS) in November 2014. As Acting Deputy Director, Brenda is responsible for all of the DHCS mental health and substance use disorder divisions. She began her state career

with the Office of Statewide Health Planning and Development. She then worked at the Department of Mental Health for almost ten years in increasingly responsible positions. She has four years of management experience with the Department of Corrections and Rehabilitation during which she advanced from a Research Manager II to a Research Manager III, then Deputy Director. Prior to her appointment as Assistant Deputy Director, Brenda was the Chief of the DHCS Mental Health Services Division. Brenda has a Bachelor's and Master's Degree in Psychology.



Lori Hill, PhD — Lori Hill is an educator and licensed psychologist who has received awards from the California Psychological Association (CPA) for public service (1996) and for contributions to the profession (1999). In 2010, Harry Belafonte convened a Violence Prevention Summit in New York City in 2010, invited Dr Hill, distributed her article, "The Costs of Violence", to conference participants and had her give the opening keynote. Lorie has given conference keynotes and

workshops on violence prevention and diversity, both locally and nationally. She was an invited participant on Oakland and Alameda County task forces focusing on violence prevention strategies. In 1995, she presented a day long workshop at the International Conference on Conflict Resolution in St Petersburg, Russia. Since 2014, Lorie has worked as a psychologist at Deuel Vocational Institute (DVI), a men's state prison in Tracy, CA.

Initially, she worked in DVI's Reception Center and currently works on the mainline with men sentenced to Life with Parole. Prior to Lorie's work at DVI, she designed and facilitated a group for 2 ½ years called Changing Gears, for people returning to Alameda County, all people of color, all with: HIV or AIDS, substance abuse problems and complex trauma. She teaches diversity and violence prevention courses at Bay Area graduate psychology programs and was director of John F. Kennedy University's training center in Concord, California for four years, the largest outpatient mental health counseling center in that county. Lorie is founder and director of a nonprofit, Providing Alternatives to Violence (PAV), which has given violence prevention and diversity workshops for over 6,500 young people and 1,200 adults. She had a private practice and now coaches, consults and facilitates discussions, usually on conflict resolution, violence prevention, diversity trauma and public policy. She co-edited a monograph, *Breaking Barriers: Psychology in the Public Interest*, published by the CPA. Her articles include "Diversity as an Integral Aspect of Conflict and Violence," "Suicide as a Race and Gender Issue," and "Addressing Racism in Therapy." Unpublished articles include: *The Causes of Violence* (2008) and *The Costs of Violence* (2010).



Robert Horon, PhD — Robert Horon has worked for the California Department of State Hospitals (DSH) or the California Department of Corrections and Rehabilitation since 1994 and in a number of capacities. He has been involved in DSH studies on the neuropsychology of schizophrenia, and on predictors of violence risk and was the principal investigator on studies of violence risk, and suicide risk within DSH patients. He has worked in both community and institutional

inpatient settings for many years. In 2006, Robert the director of an APA-Accredited internship and a postdoctoral fellowship at the DSH facility in Vacaville, CA (DSH-V). While at DSH-V, he designed and was the principal investigator on a large study of suicide risk assessment tools and suicide risk factors in an incarcerated sample. Specifically, a group of 620 psychiatrically hospitalized inmate/patients were evaluated on a battery of standardized and experimental suicide risk assessment measures while collecting data on prior attempts, personal and criminal history, etc. From 2015 to 2017, Robert served as the DHCS (Headquarters) Suicide Prevention and Response Focused Improvement Team (SPRFIT) Coordinator for CDCR. In this role, he presented monthly suicide prevention videoconferences, developed and conducted related webinars and workshops, conducted suicide reviews, and participate in statewide policy and practice development. Robert currently is the Chief Psychologist at the California Health Care Facility (CHCF), a modern prison dedicated to treating a variety of mental health and medical needs.



Gloria Killian — Gloria Killian was released from prison on August 8, 2002 after serving a total of 17 ½ years on a sentence of 32 years to life for a crime that she did not commit. Originally, she was charged with the death penalty. Throughout her trial and incarceration she always maintained her innocence.



Chad Koyanagi, MD — Chad Koyanagi is part of a "Street Team" of professionals on Oahu that are successfully working to reduce homelessness. Hawaii per capita has a higher incidence of homelessness that both New York and California!



Kathleen Lacey, LCSW, MSW — Kathleen Lacey is the Director of University of California San Francisco's Citywide Case Management Forensic Program that provides assertive community treatment to 400 criminal justice-involved individuals with mental illness in the community.

With over 25 years experience working in the criminal justice system and 20 years focused on the needs of individuals with serious mental disorders, she has expanded the focus of treatment to include: an emphasis on cultural and gender specific services; a comprehensive Dialectical Behavior Therapy program; a Full Service Partnership Program through San Francisco's Mental Health Services Act funds; a comprehensive Supported Employment program; mental health services for the San Francisco Sheriff Department's No Violence Alliance Program and the Adult Probation Department; and the recent creation of a Misdemeanor Behavioral Health Court in San Francisco. She graduated from Gonzaga University in 1989 with a Bachelor of Arts Degree in Philosophy and Speech Communications; received her Masters in Social Welfare from the University of California, Berkeley in 1997 and has practiced as a Licensed Clinical Social Worker since 2001.



Robert Landry, PhD — Robert Landry is a clinical psychologist. He has worked at Mule Creek State Prison for 14 years, primarily as a CCCMS clinician. His primary clinical interest has been rehabilitative programming and long term, deep change processes.



Francesca Lehman, PsyD — Francesca Lehman is a licensed clinical and forensic psychologist in California. Her practice consists of conducting forensic psychological evaluations for the Courts with children, adolescents, and adults. She has been qualified as an expert witness in multiple counties in California as well as in Federal Courts and has been retained as an expert in numerous fitness/transfer matters.

Francesca was previously a supervisor at Sharper Future, a forensic rehabilitation program, and was previously an adjunct faculty member at Alliant International University's California School of Forensic Studies.



Honorable Stephen Manley — Stephen Manley is a Superior Court Judge in Santa Clara County and has served as a Judge for over 30 years. He presently serves as the Supervising Judge of all Felony and Misdemeanor mental health and drug cases in the Criminal Division of the Court. He developed and personally presides over a number of Treatment Court programs and calendars that include more than 2,000 offenders who participate in treatment and rehabilitation

services while in Diversion, or on Probation, or Parole, are mentally ill, mentally challenged, or substance abusers. He established one of the first Mental Health Courts in the Nation in 1998, one of the first Veterans Treatment Courts in 2012, as well as the first Parolee Re-entry Court in California in 2007. By appointment of the Chief Justice, he serves as a member of the California Council on Criminal Justice and Behavioral Health, that advises the Governor and Legislature on policy issues relating to the mentally ill. He is Chair of the Mental Health Committee of the Advisory Committee to the Judicial Council. Stephen served on, and authored recommendations for the Judicial Council Mental Health Task Force that were adopted by the Judicial Council relating to mentally ill offenders. He recently served as the Co-Chair with a Member of the Board of Supervisors of his County for the Jail Diversion and Custody Operations Task Force. He has also served on the faculty of the California Judicial College and speaks throughout the Country. In 2008, he received the Chief Justice's Award for Exemplary Service and Leadership. He is a graduate of Stanford Law School.



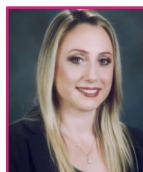
Mathew Mock, PhD — Mathew Mock is Professor of Psychology with the College of Professional Psychology at John F. Kennedy University (Pleasant Hill, San Jose and Berkeley). He has also had a longstanding private clinical and consulting practice with a specialty in diversity, cultural competence and social justice. Mathew received his Bachelor of Arts degree in psychology from Brown University and he received his Doctorate and Masters

degrees in clinical and consulting psychology from the California School of Professional Psychology (CSPP). He served as the statewide Director of the Center for Multicultural Development with the California Institute for Mental Health in Sacramento, California. Prior to this, he was Director of the Family, Youth, Children's and Multicultural Services for the City of Berkeley Mental Health Division where he was practicing for over 20 years. Mathew was also Director of the Cross Cultural Program, and

Professor of Psychology with the Graduate School of Professional Psychology at John F. Kennedy University (JFKU) focusing on diverse children and families. Mathew Mock has worked with numerous universities and colleges extensively providing psychotherapy, consultation and training on multiculturalism, clinical interventions with Asian-American families and ethnic children, immigration, treatment of trauma, interracial relationships and biracial identity. He has given dynamic, invited presentations locally, nationally and internationally to community groups, universities, at conferences and on television and radio. His workshops and trainings consistently received the highest ratings by participants.



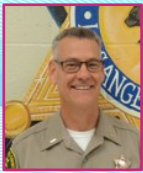
Lahela Mattox, MA — Lahela Mattox is the Local Government Liaison for the Homeless Coordinating and Financing Council (HCFC) since August 2018. She is also the current Acting Grant Manager for the Homeless Emergency Aid Program (HEAP). Ms. Mattox is responsible for establishing partnerships with local government agencies, Continuums of Care, homelessness councils, community-based organizations, nonprofit entities, local service providers, consumers, and community members. As the Acting Grant Manager for HEAP, she provides program oversight and technical assistance to the 43 Continuums of Care and 11 large cities, who are the recipients of HEAP funds. Ms. Mattox has more than 20 years of experience in social services, mental health services, and other related fields, both in Hawaii and California. Her career includes both non-profit and government experience in direct services, quality assurance, program management, and program development. Prior to joining HCFC, Ms. Mattox served as Chief of the Certification Unit with the Department of Health Care Services, Mental Health Services Division. She has spent her career working with some of the most vulnerable populations and is passionate about building partnerships and working collaboratively to build stronger communities. Ms. Mattox holds a Master of Arts-Counseling degree from Chapman University, Sacramento Campus and a Bachelor of Arts-Psychology degree from Hawaii Pacific University.



Katherine Minnich — Katherine Minnich has served in a variety of managerial and leadership positions. Most recently, she was appointed as Deputy Director of Human Resources (HR) for the California Department of Corrections and Rehabilitation (CDCR) in 2016. Previously, Katherine served as CDCR's Associate Director, HR as well as Associate Chief, Office of Personnel Services with direct responsibility for specific HR programs. Prior to joining CDCR, as the Chief of the Human Resources Branch at the California Health Benefit Exchange, Katherine was instrumental in the development and activation of this new agency, creating an HR program that successfully met the hiring goals set forth by the Federal Affordable Care Act. Katherine is passionate about the health and wellbeing of CDCR staff, and is actively involved in the development and implementation of several CDCR employee wellness initiatives to further enhance a culture that supports staff's overall health and well-being and to build sustainable programs that positively impact staff throughout their career.



Susan Napolitano, PhD — Susan Napolitano has more than 20 years experience as an expert witness in civil and criminal court cases. A native of New York, she earned a bachelor's degree in psychology from LeMoyne College in Syracuse, N.Y. and a master's in clinical psychology from Fairleigh Dickinson University in Madison, N.J. She completed her PhD at the California School of Professional Psychology in Fresno, California, in 1991, followed by two years of post-doctoral training in child, adolescent and adult clinical psychology at the Sullivan Center for Children. Susan served as Assistant Clinical Director of the Sullivan Center for Children in Fresno, California for 15 years. She served as chief of staff at Cedar Vista Hospital in 1999, and formerly worked as an adjunct faculty member of the California School of Professional Psychology and Fresno Pacific University. As an expert witness, Susan has testified on behalf of prosecutors, plaintiffs and defendants in cases involving Mentally Disordered Offenders (MDO), sexual abuse of children, sexual abuse allegations, child custody, malpractice, and personal injury. She is an expert in Child Sexual Abuse Accommodation Syndrome (CSAAS) and received training by the Child Abuse Training and Technical Assistance (CATT) centers as a Child Forensic Interview Specialist. Susan served as Child Forensic Interview Specialist with the Madera County Child Sexual Assault Response Team (CSART) from 2006 through 2010. She has mentored new psychologist evaluators, testified throughout California and provided expert consultation for attorneys.



Lieutenant David Petrocelli — David Petrocelli has been involved in the improvement of Jail Mental Health programs for the last 20 years. He has worked to develop close working relationships between custodial staff, mental health, and medical professionals in order to promote a more holistic approach to the care and treatment for those persons within the Los Angeles County jail system. David would like to move the great majority of the jail mental health population to facilities and organizations outside of the jail system where they can receive appropriate treatment and rehabilitation outside of a custodial setting.



John Philipsborn, JD — John Philipsborn has been a criminal defense lawyer since 1978, primarily in private practice. He has represented persons in criminal cases in a wide variety of jurisdictions around the United States, and has been involved in the defense of more than 30 capital cases in his career. He has been recognized for his work on cases involving complex mental health issues, and has been presenting to professional groups on forensic mental health issues for more than 30 years. He has been published more than 100 times in books and periodicals, and has figured as counsel of record or amicus counsel in more than 90 published appellate cases. He was a 2015 recipient of FMHAC's Christine West Award, and the 2016 recipient of the Lifetime Achievement Award from California Attorneys for Criminal Justice.



Melissa Piasecki, MD — Melissa Piasecki is a forensic psychiatrist and Professor of Psychiatry at University of Nevada, Reno School of Medicine where she teaches medical students and psychiatry residents on topics of neuroscience, psychiatric diagnosis, forensic psychiatry and addictions. As a faculty member of the National Judicial College, she teaches judges on topics of mental health, adolescent brain development and the neuroscience of addiction. Melissa trained at University of Vermont and University of Hawaii. She had authored articles, chapters and books on topics related to addiction, correctional psychiatry and capital cases. She is a practicing forensic psychiatrist and a consultant to the US Department of Justice.



Norbert Ralph, PhD, MPH — Norbert Ralph is a clinical psychologist at the Juvenile Justice Center in San Francisco. He is the Coordinator of the Juvenile Sexual Responsibility Program, Coordinator for the Juvenile Court Alienist Panel, Coordinator for Psychological Training, and Chair of the Competency Evaluation Committee. He is Chair of the CCOSO research committee and a member of their Adolescent Guidelines Committee. Norbert is also a psychiatric epidemiologist, and neuropsychologist. With nearly 40 publications including articles, book chapters, blogs, or books. He was formerly Associate Clinical Professor in Family Practice, at University of California School of Medicine at Davis, and Lecturer and Research Biostatistician in the Program in Maternal and Child Health, School of Public Health, at the University of California, Berkeley. He is a Trainer for Aggression Replacement Training through the California Institute for Mental Health. Norbert is a member of the Quality Management Committee, All Care Independent Physician Association. He is a founding board member and Treasurer of the East Bay Children's Law Offices which provides legal services to foster children in Alameda County. He is on the Conference Committee of the Forensic Mental Health Association of California.



James Rokop, PhD — James Rokop is the Chief Psychologist for the California Department of State Hospitals Sexually Violent Predator Program. In prior positions with the State of California, James worked as a staff psychologist for the DMH-Vacaville Psychiatric Program on the acute psychiatric unit; worked as a Consulting Psychologist with the DMH/DSH Sexually Violent Predator Program; and worked with the Board of Parole Hearings as a forensic psychologist, performing assessments of life-term inmates facing the possibility of parole. He also maintains a private practice with a focus on both juvenile and adult forensic evaluations. James has presented on various forensic topics including risk assessment of juveniles and adults. In 2017, he published a chapter on adolescent sex offenders in a forensic psychiatric textbook.



Charles Scott, MD — Charles Scott is Chief, Division of Psychiatry and the Law, Forensic Psychiatry Fellowship Training Director, and Professor of Clinical Psychiatry at the University of California, Davis Medical Center in Sacramento, California. He is Board Certified in Forensic Psychiatry, General Psychiatry, Child and Adolescent Psychiatry, and Addiction Psychiatry. Charles is a Past-President of the American Academy of Psychiatry and the Law (AAPL) and is also Past-President of the Association of Directors of Forensic Psychiatry Fellowships. He has served as a member of the AAPL national task force to develop guidelines for the evaluation of criminal responsibility and competency to stand trial. Charles is one of four national AAPL Forensic Psychiatry Review Course Faculty instructors and in 2008 received the AAPL award as the most outstanding forensic psychiatry fellowship program instructor in the United States. He has served as a forensic psychiatric consultant to jails, prisons, maximum security forensic inpatient units, California Department of State Hospitals, and as a consultant to the National Football League (NFL) providing training on violence risk assessment for NFL counselors. He has performed suitability evaluations for NASA's Astronaut Selection Board. His academic subspecialty is child and adolescent forensic psychiatry. Charles has authored book chapters on juvenile violence, mental health law, and co-authored chapters on child psychiatry and the assessment of dangerousness. He has served as editor or co-editor for numerous books. He is also co-editor of the Third Edition of Principles and Practice of Forensic Psychiatry, which was awarded the 2018 Manfred Guttmacher Award by the American Psychiatric Association for best forensic publication of the year.



Sharmil Shah, PsyD — Sharmil Shah has over 20 years of non-profit experience in providing clinical services, management, business development and community outreach. She is currently the Chief of Program Operations at the Mental Health Services Oversight & Accountability Commission. She directs, supervises, and manages the day to day operations of a complex, highly visible program that includes Plan Review, Innovation and Prevention and Early Intervention. Prior to this she has worked at Child Guidance Center, Inc, an Orange County based non-profit as a Child Therapist and then with Family Service Association and the Department of Social Services, as the Director of the Child Abuse Prevention Council of Riverside County. Sharmil received her Bachelor's degree in Psychology at UC Riverside, her Master's degree at Chapman University and her PsyD at California Southern University, with a specific emphasis on Children and Trauma. She also serves as a Citizen Review Panel Member for the Prevention of Child Abuse and Neglect.



Toni Tullys, MPA — Toni Tullys is Behavioral Health Services Director in the Santa Clara Valley Health and Hospital System. Toni leads an integrated department, providing mental health, substance use and prevention services serving more than 36,000 individuals annually. Prior to her current role, Toni served as Alameda County's Deputy Director of Behavioral Health Care Services, responsible for operations and services, and as Quality Improvement Director, focused on organizational change processes and improvement efforts. Toni has more than 30 years of experience in health care, and has held several leadership roles, including executive positions with the Visiting Nurse and Hospice Association of Northern California and Alta Bates Medical Center/Sutter Health. In her early career, she worked as a registered nurse, nurse manager and nurse administrator, overseeing hospital-based nursing operations. She earned her BS at California State University East Bay and her Master's in Public Administration at the University of Southern California, where she received the Women in Leadership Award.

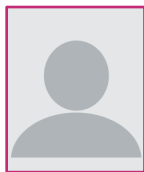


Nick Turkovich — Nick Turkovich started his Law Enforcement career in 1987 after eight years in the US Military where he served as a Medic. He served for 25 years with the Antioch Police Department until retiring in 2012 due to several injuries sustained in the line of duty. Having had prior experience with Post Traumatic Stress Disorder (PTSD) from his time in the military, he saw a need for a Peer based support system at our department and was pleased to have support from leadership to start a program. In 2008, Nick was introduced to the West Coast Post Trauma Retreat, which is a non-profit organization established in 2001 that treats First Responders for PTSD, Critical Incident Stress, and cumulative stress associated with the profession. I have been a volunteer with this organization since then and in 2014 and became Peer Director of the organization.

Nick received training and certificates in Basic and Advanced Critical Incident Stress Management from the International Critical Incident Stress Foundation, in Officer Involved Shooting Critical Incident Intervention, Basic Peer Support, Suicidal Subjects Intervention, Crisis Intervention, and Advanced Peer Counseling from California Police Officer Standards and Training (POST). He has been a certified instructor for California POST for over twenty years in the following areas: First Aid Instructor, Bloodborne Pathogens Instructor, Small arms Instructor, Field Training Officer Instructor, Train the Trainer, Mental Health Survival, Basic and Advanced Peer Support. Nick has spoken at Law Enforcement Conferences in The United States and in Mexico on the topic of Mental Health Resiliency for First Responders. He has been happily married to his wife Theresa since 1989. They have two grown daughters, and live in the San Francisco Bay Area.



Geoff Twitchell, PhD — Geoff Twitchell is a Licensed Clinical Psychologist with advanced training and expertise in addiction, treatment of co-occurring mental health disorders, Trauma Informed Care, and evidence based treatments to reduce recidivism in justice involved populations. He obtained his Bachelor's degree in Psychology from the University of Washington, his doctorate in Clinical Psychology from Michigan State University and he completed a postdoctoral fellowship at UCLA's Integrated Substance Abuse Programs. Geoff took his position as Treatment Director for the San Diego County Probation Department in September 2013. In this new position for Probation, he has assumed responsibility for identifying, implementing and evaluating evidence-based treatments for justice-involved populations, including those with co-occurring mental illness. Geoff is lead on an ongoing County-wide effort to evaluate justice-involved treatment programming. Most recently he assisted in development and implementation of a 6-day curriculum (Justice Involved Services Training Academy-JISTA). This academy is designed to educate and train treatment providers in the use of best practices when addressing the unique characteristics and needs of individuals coming into contact with the justice system, including the large subpopulation that suffers from severe mental illness. Geoff serves as the Clinical Liaison to Juvenile and Adult Superior Courts, community treatment providers, Behavioral Health Services, Sheriff's Department, District Attorney's Office, and Office of the Public Defender. Geoff Twitchell co-chairs the County Health and Justice Integration Committee. He also holds a clinical appointment at UCSD School of Medicine's Department of Psychiatry and he facilitates intern and practicum field placements in Probation for SDSU School of Social Work undergraduate and graduate students.



Doug Ugarkovich — Doug Ugarkovich has spent nearly 30 years working with high-risk youth. 27 of those years he was with the California Youth Authority (CYA), later known as the Division of Juvenile Justice (DJJ). Prior to his state service, he was a Youth Employment Technician for a school district's Special Programs Unit assisting high-risk youth with obtaining and maintaining subsidized employment. He also worked as a Youth Counselor in a group home providing treatment services for severely emotionally disturbed youth. As a DJJ Court and Community Liaison, he reviewed commitment packets sent to DJJ from the various counties to ensure they were lawful commitments and all the statutory requirements were met. Doug also ensured that the court orders were congruent with the other documents within the packet. Part of this review process included reviewing the commitment packet for any mental health and/or medical issues that would warrant further internal review for the appropriateness of the commitment order and the proper intake placement. In this position, Doug worked closely with county juvenile justice stakeholders to help inform them of DJJ's programs, services and reform efforts. These county stakeholders included judges, district attorneys, defense attorneys, special investigators, probation administrators and officers, mental health and education service providers, juvenile justice commissions, advocacy groups, and private sector entities.

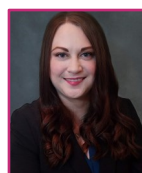


Nicole Vienna, PsyD — Nicole Vienna is a licensed clinical psychologist with specialization in clinical and forensic psychology. She received her PsyD in Clinical Forensic Psychology from Alliant International University, Irvine/San Diego. She also completed a now APA Accredited Pre-Doctoral Internship at the Los Angeles County Department of Mental Health Men's Forensic Outpatient Program at Twin Towers Correctional Facility, where she received specialized training in clinical and forensic psychology.

Nicole completed Postdoctoral Rotations at Los Angeles County Department of Mental Health, Juvenile Justice Camps & Halls, where she received specialized training in adolescent psychological assessment and treatment. She is a member of The Los Angeles County Juvenile Delinquency Expert Panel. Nicole specializes in forensic psychology, public safety psychology, trauma, psychological assessment and evaluation. She conducts psychological evaluations for public safety candidates for appeal purposes. Nicole is Peace Officer Standards and Training (POST) qualified and a member of the psychological evaluator list through POST. Additionally, she is certified in Critical Incident Stress Management (CISM) and provides preparation, interventions, and post care for major incidents, traumatic events, and crises to public safety agencies, schools, and workplaces.



Ryan Vienna, ML — Ryan Vienna is a committed leader holding positions in the private and public sectors. Ryan is the Chief Executive Officer (CEO) and President of Vienna Psychological Group, Inc. This endeavor launched in August 2015, in partnership with his wife (a forensic psychologist), aims to promote healthy living and safer communities through outstanding mental health services. Under Ryan's leadership, the corporation began pressing forward serving first responders, veterans, their families, and others in need of services. Ryan is an active, full-time, sworn Lieutenant with the Los Angeles County Sheriff's Department and a 14 veteran in law enforcement. In January 2016, Ryan was recognized by the American Jail Association (AJA) as one of 35 people selected nationwide as a young up-and-coming corrections professional who has made significant contributions to the jail industry, a future leader of the industry, and someone who is making a positive impact on the corrections profession early in their career. In addition to Ryan's career in law enforcement, he has a passion for public service. In March 2017, Ryan was elected to the San Dimas City Council where he currently serves. Ryan represents the City of San Dimas as the delegate to the League of California Cities and the California Contract Cities Association.



Bethany Walters, PhD — Bethany currently serves as a contributing faculty member at Walden University, where she is an instructor in the graduate forensic psychology program, and serves on student dissertation committees. She received her PhD in Clinical Forensic Psychology from Alliant International University, and has experience providing psychological evaluations and treatment for adult and juvenile offenders in outpatient and inpatient forensic settings. An international presenter, Bethany's publications and research have focused primarily on psychopathy, mass and serial homicide, and sexual offenders.



Brandon Yakush — Brandon received his doctorate from Loma Linda University in 2006. He started at the Department of State Hospitals Atascadero (formerly Atascadero State Hospital) that same year on an admissions unit. In March 2007, Brandon began with the hospital's growing Forensic Services department, primarily conducting MDO evaluations of hospitalized patients. Over the past 10 years, he has conducted evaluations for DSH—Atascadero of MDOs, patients committed for trial incompetency under PC 1370, and those patients committed under PC 1026, not guilty by reason of insanity.



Helene Zentner — Helene Zentner is a Field Representative with the California Board of State and Community Corrections, where she has held several positions. Her current position is in the Corrections Planning and Grant Programs Division, and she is the lead staff for several state-funded grants including The California Mentally Ill Offender Crime Reduction (MIOCR) Grant, the Proud Parenting Grant, and the Community Corrections Partnership Plans. Over the past decade, Helene has provided leadership, coordination, and technical assistance to promote effective state and local efforts, and partnerships in California's adult and juvenile criminal justice systems. She works to promote the Board's mission to increase the use of evidence-based practices, and has been certified by the University of Cincinnati Corrections Institute, under Dr. Ed Latessa, to administer the Evidence-Based Correctional Program Checklist, a tool to assess corrections intervention programs on the principles of effectiveness.

NOTES

NOTES

[illegible]

NOTES



Forensic Mental Health Association of California
77 Van Ness Ave. #101-1316 | San Francisco, CA 94102
Main: (916) 571-8970 | Fax: (415) 358-4757
www.fmhac.net